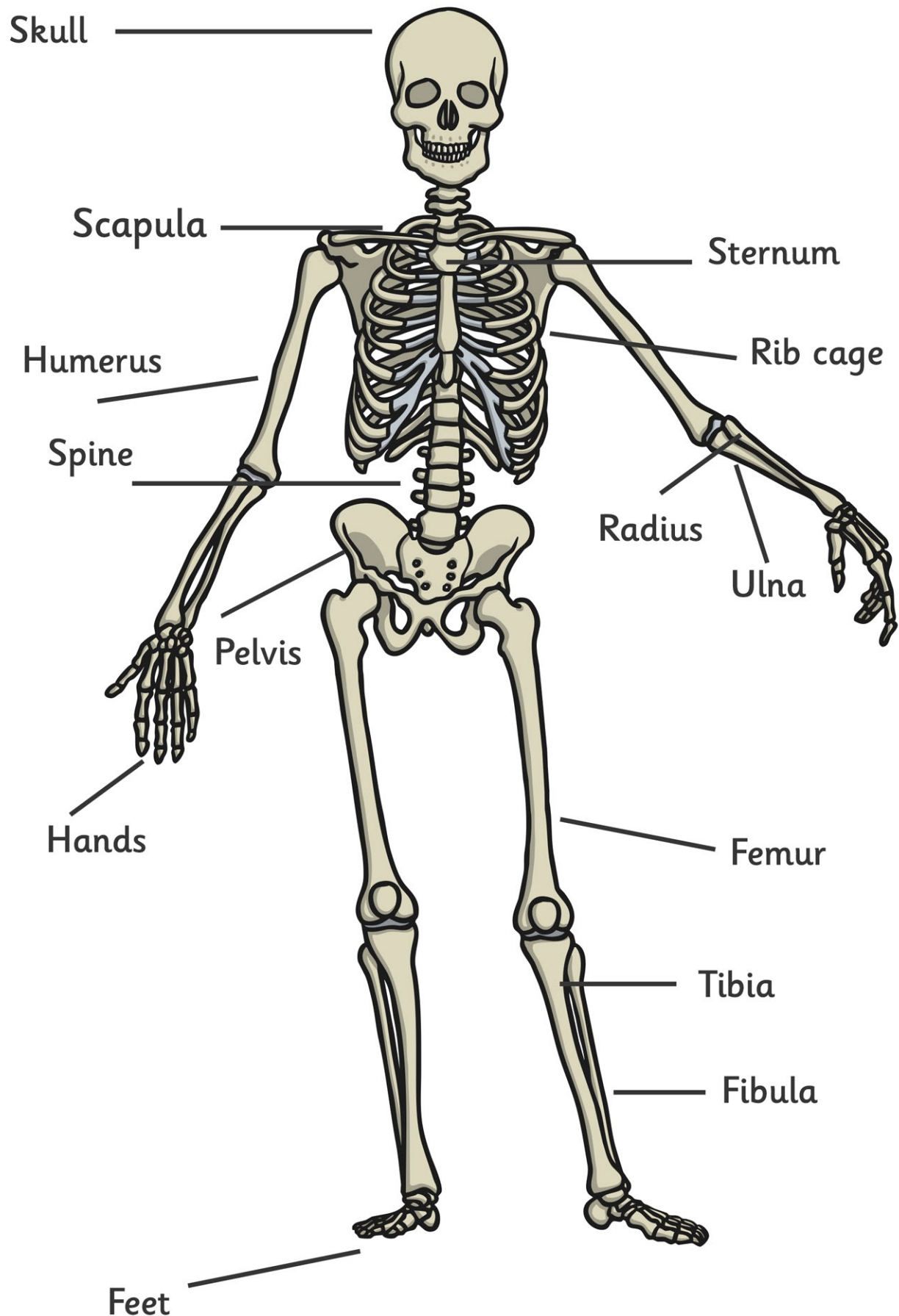
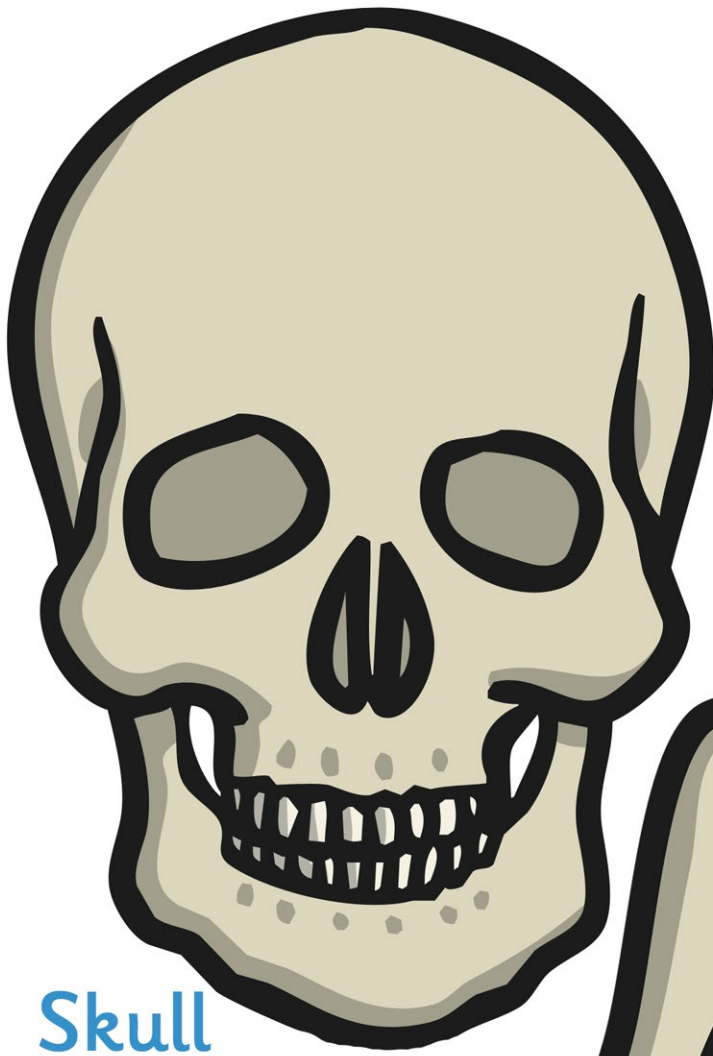


The Human Skeleton



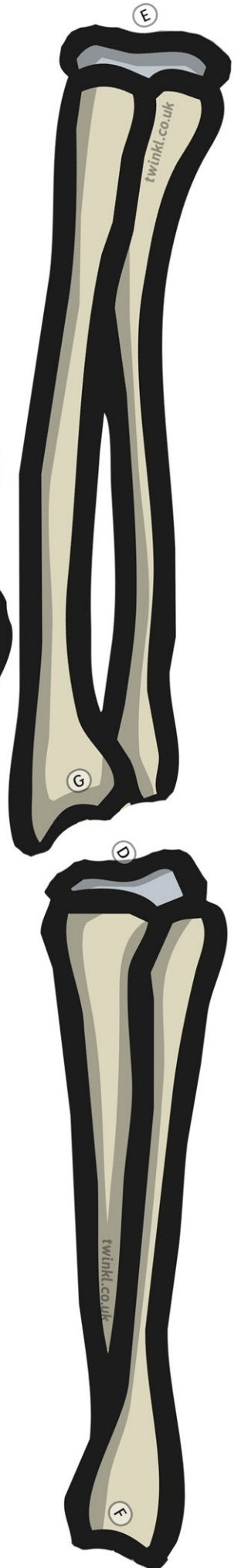
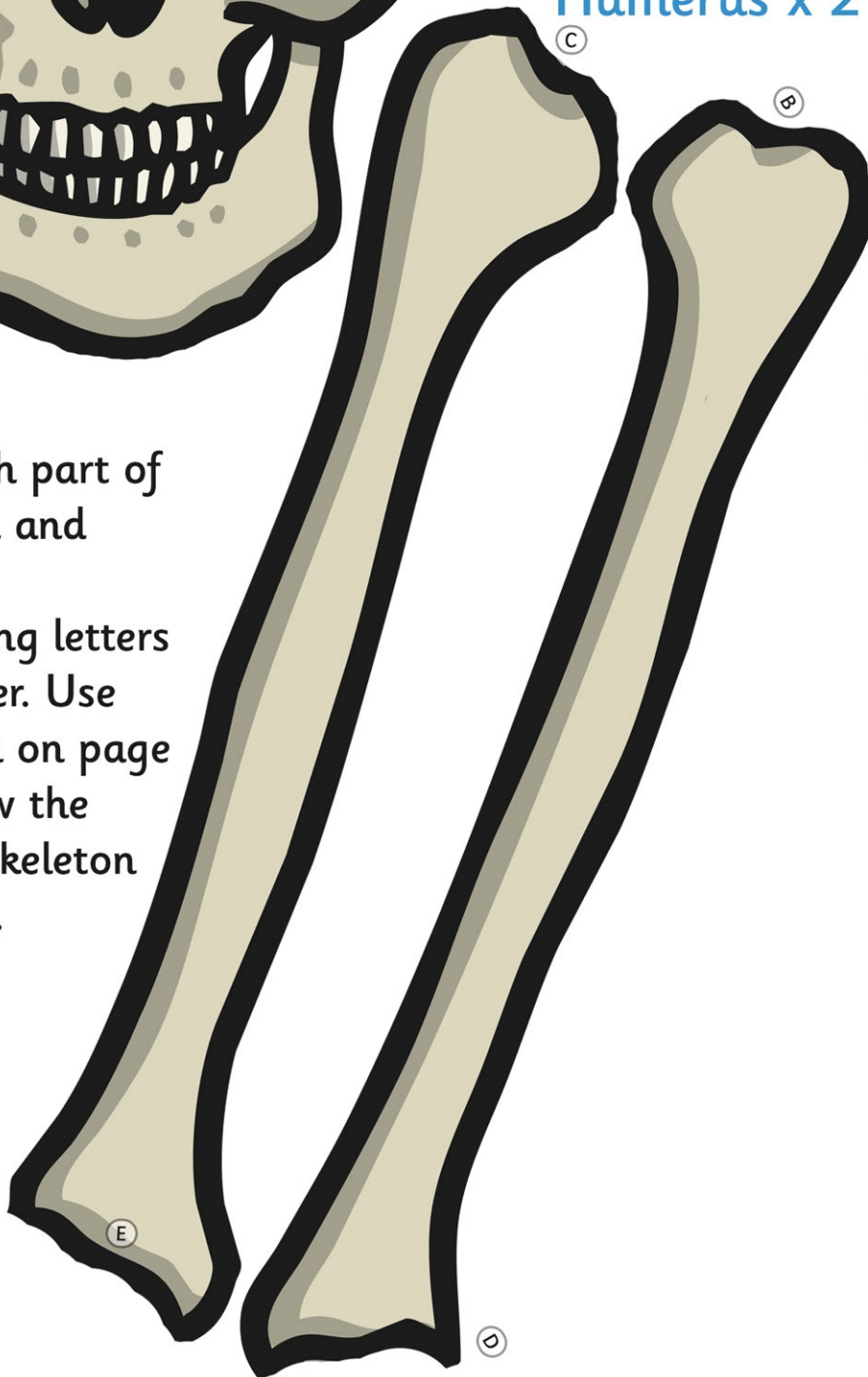
Radius and ulna x2



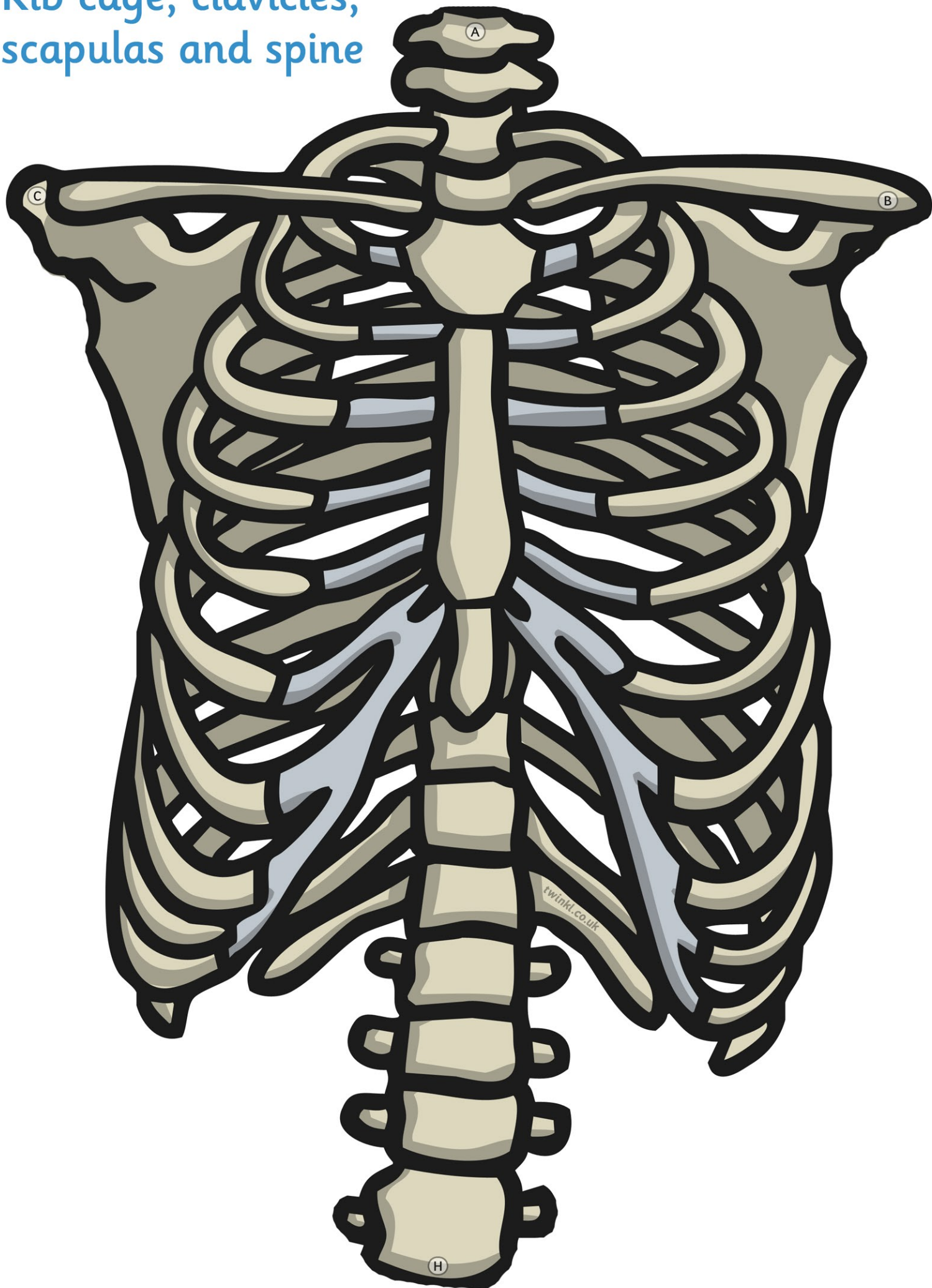
Skull

Cut out each part of the skeleton and connect the corresponding letters to each other. Use the diagram on page 1 to see how the completed skeleton should look.

Humerus x 2



Rib cage, clavicles, scapulas and spine



Femur x2

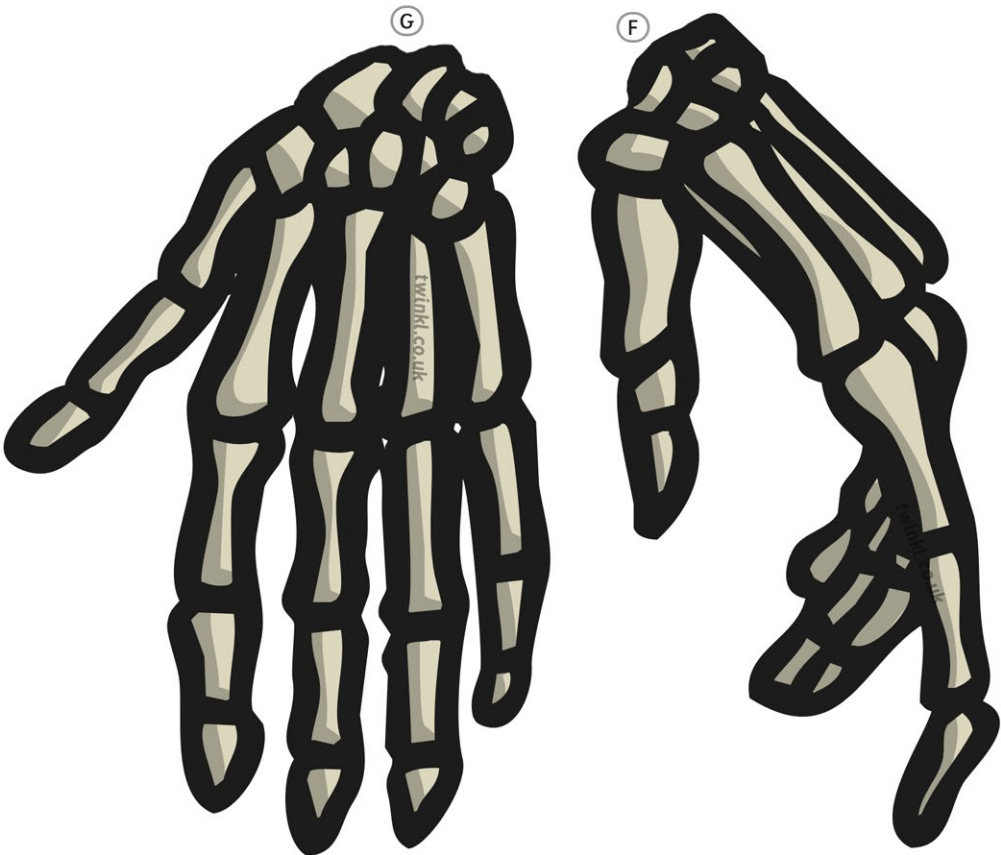


Tibia and fibula #1

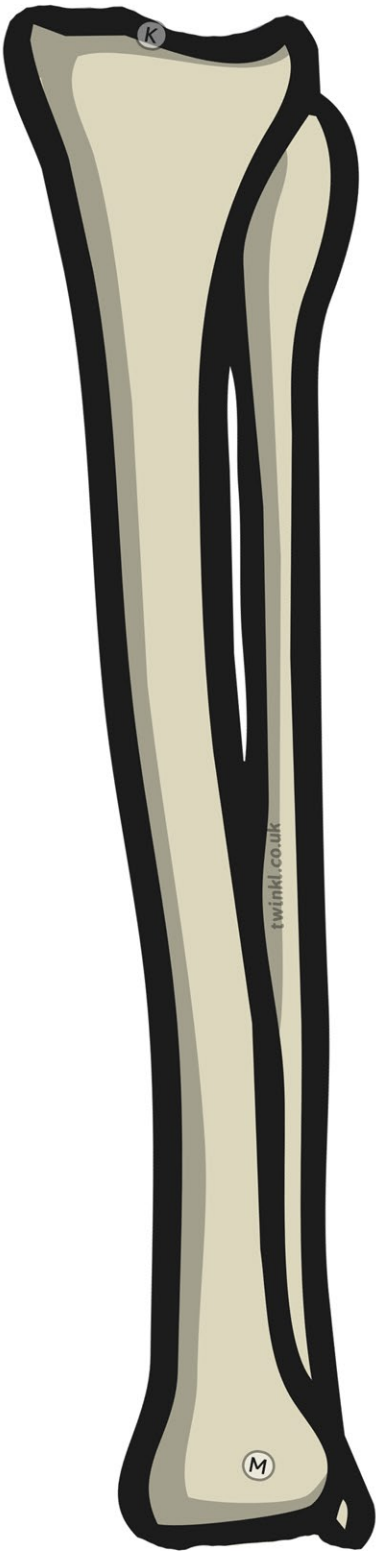
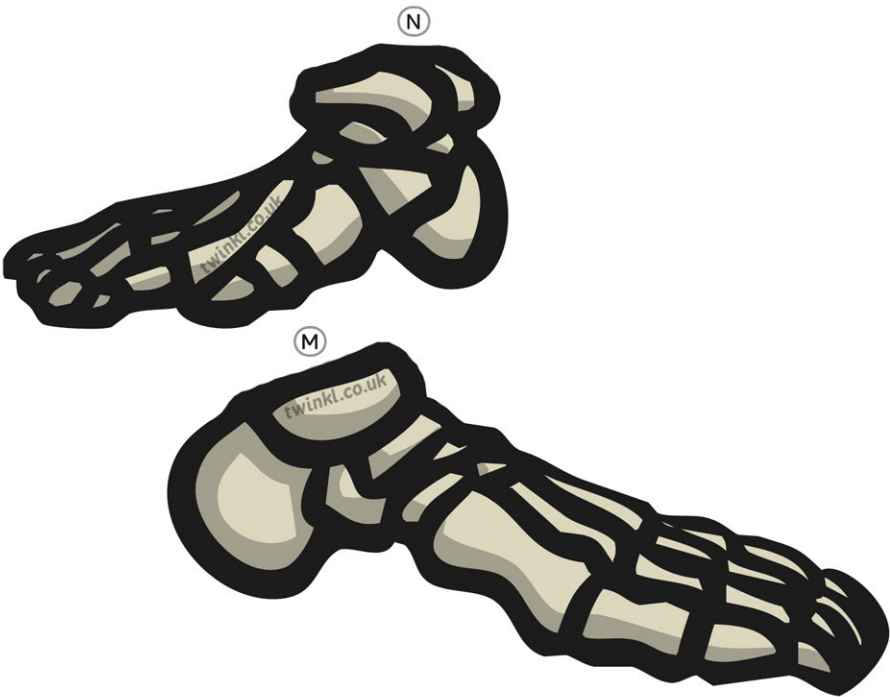


Tibia and fibula #2

Hands x2



Feet x2



Pelvis

