

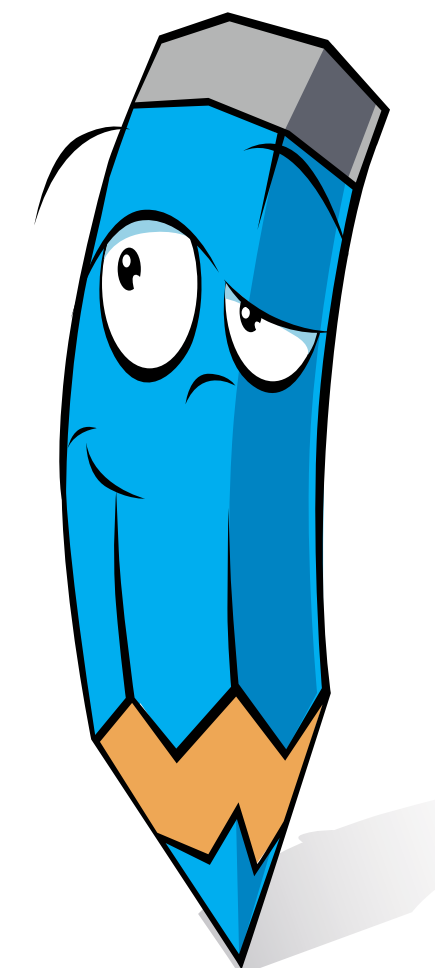
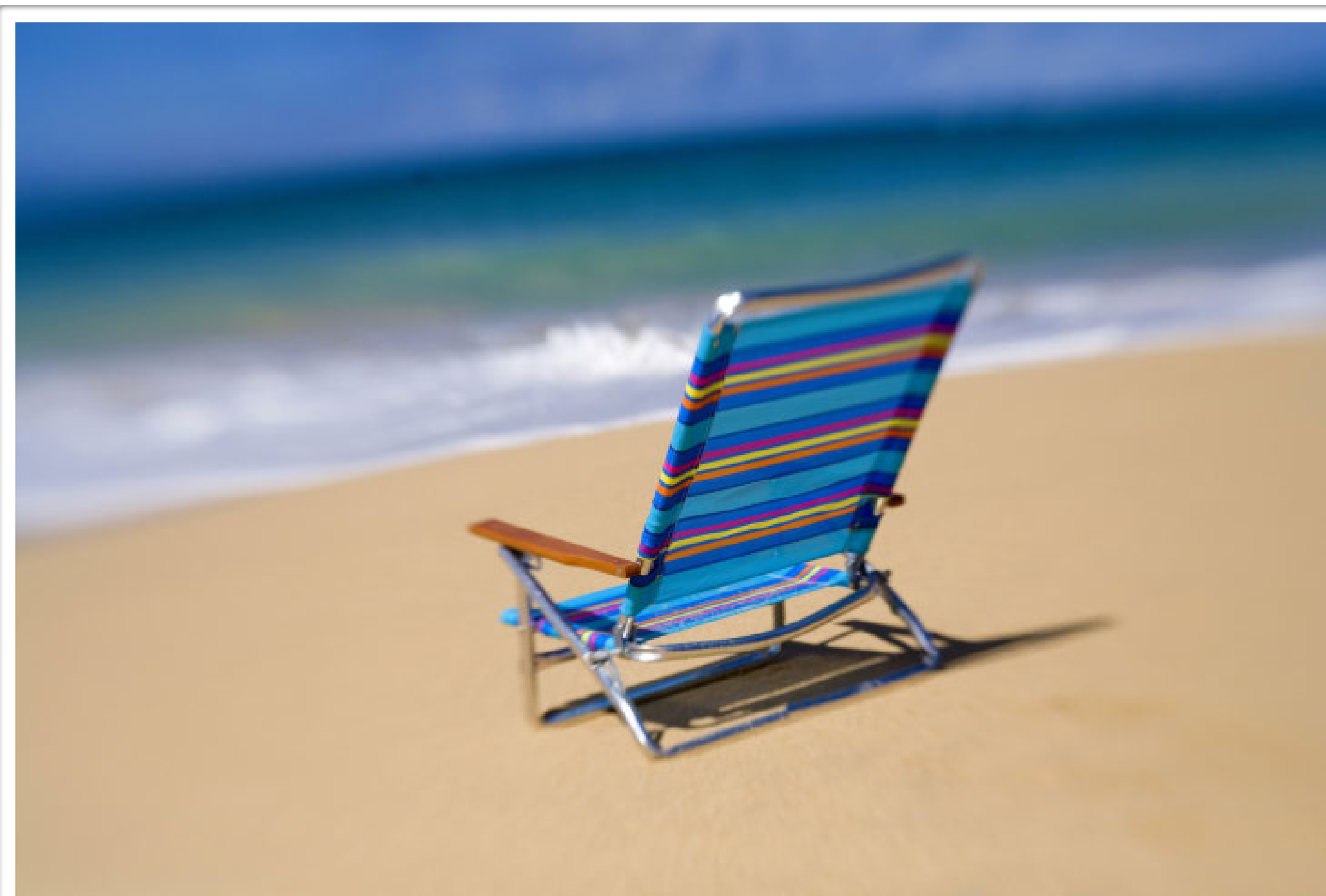
A horizontal bar at the top of the page featuring a variety of colors including yellow, orange, red, pink, purple, blue, green, and brown.

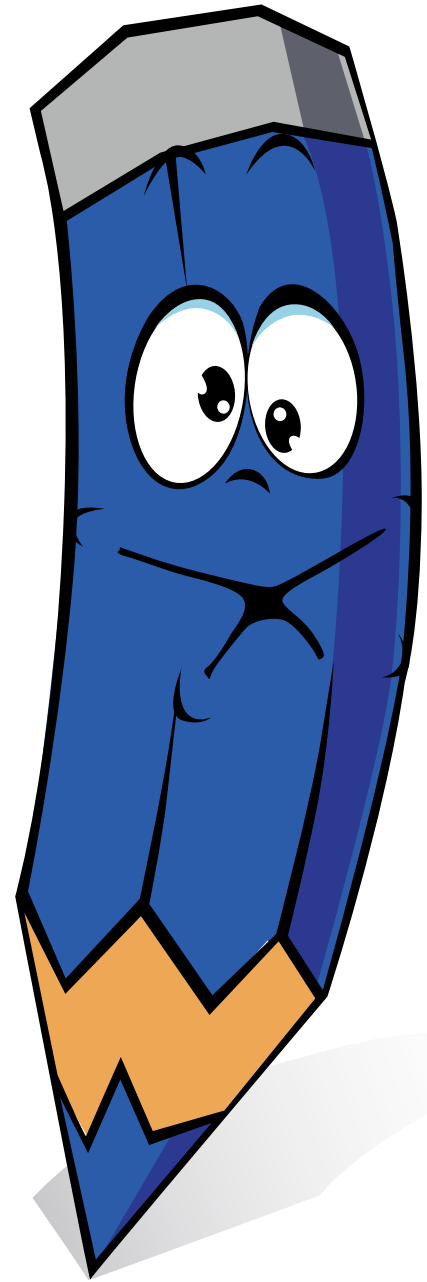
Colour Creations

Today we will be...

Finding out how to make light and dark shades of colour.

How many different types of blue can you see in this photo? How are they different from each other?



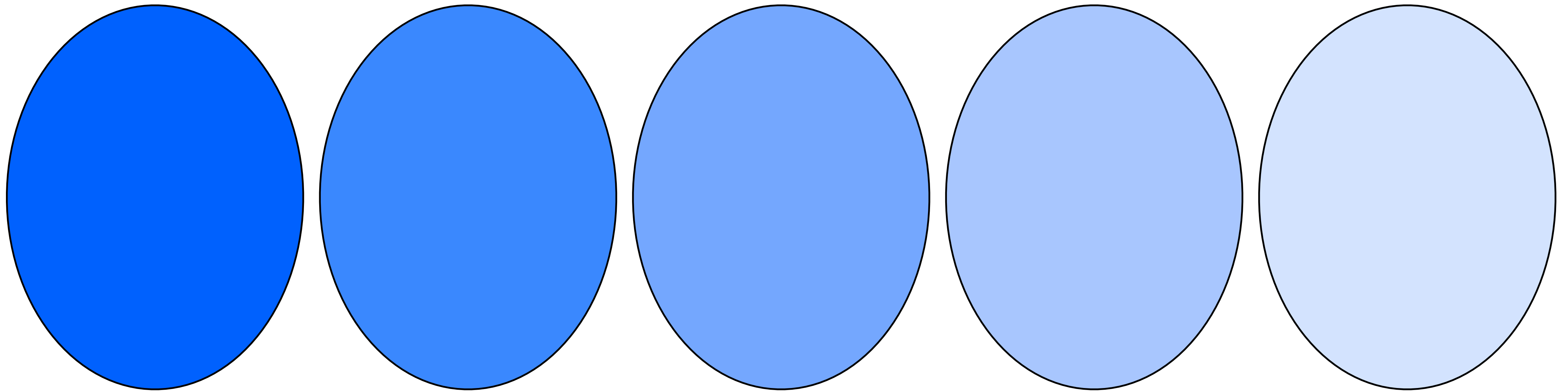


If you were going to be doing some painting with the colour blue, how could you make the colour darker?

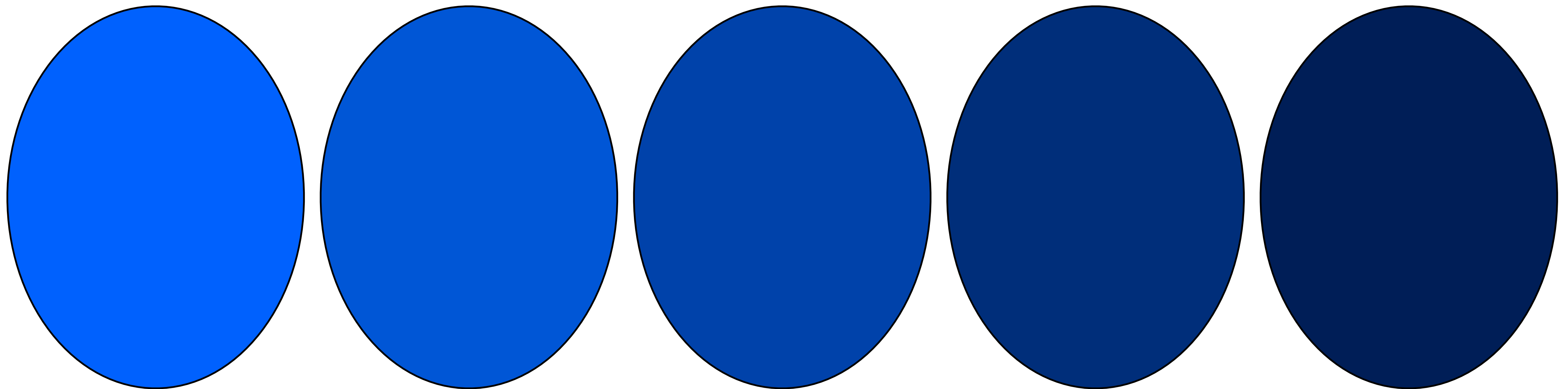
How could you make the blue lighter?



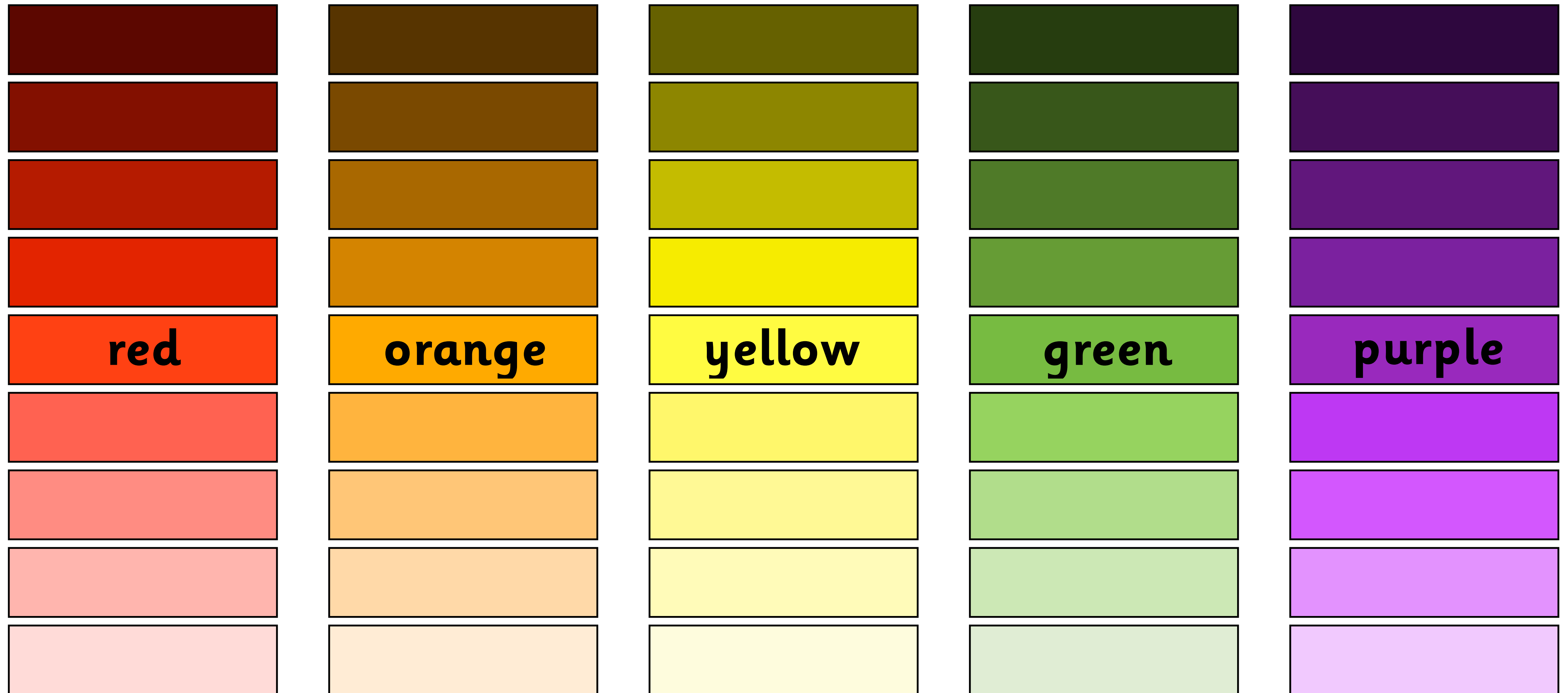
We can make lighter shades of blue by adding white. The more white paint you add to the blue paint, the lighter the shade of blue will become.



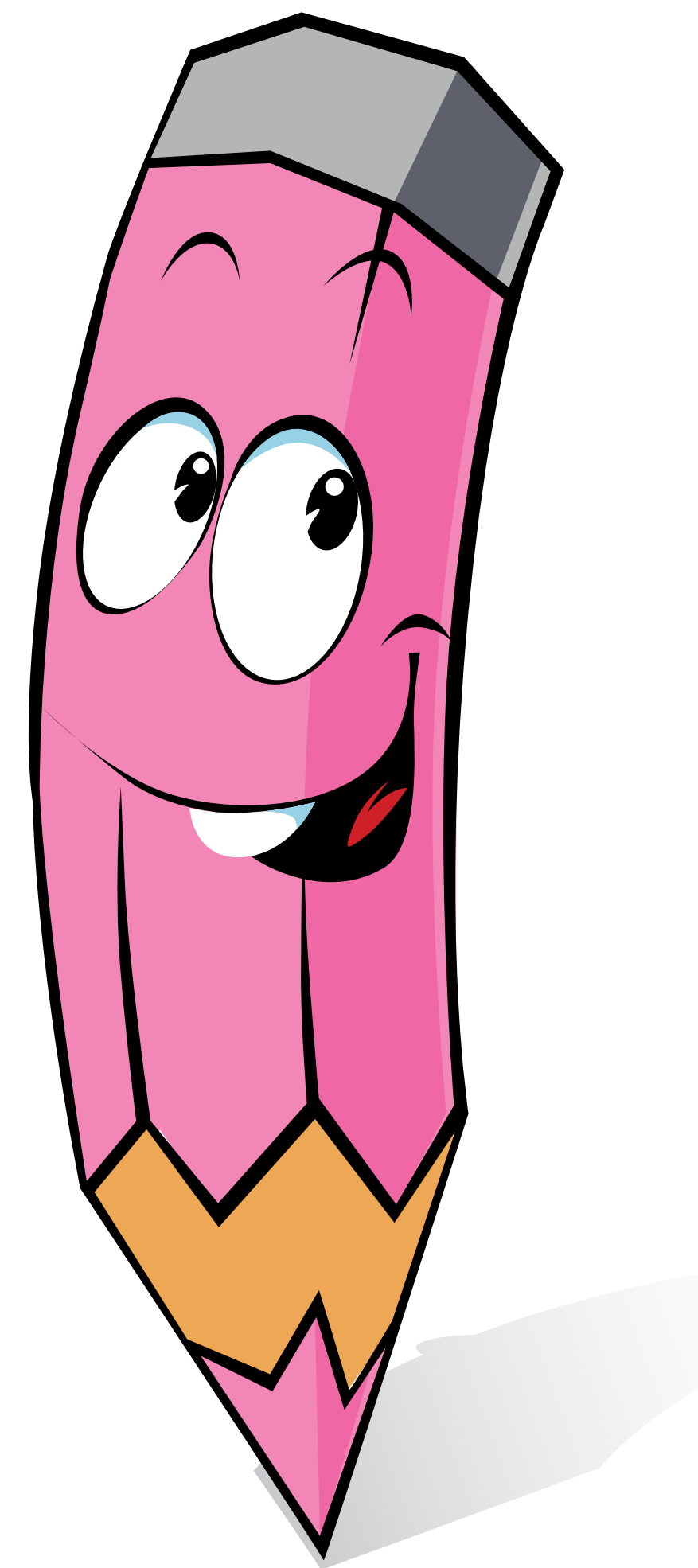
We can make darker shades of blue by adding black. The more black paint you add to the blue paint, the darker the shade of blue will become.



You can do the same thing with any colour..

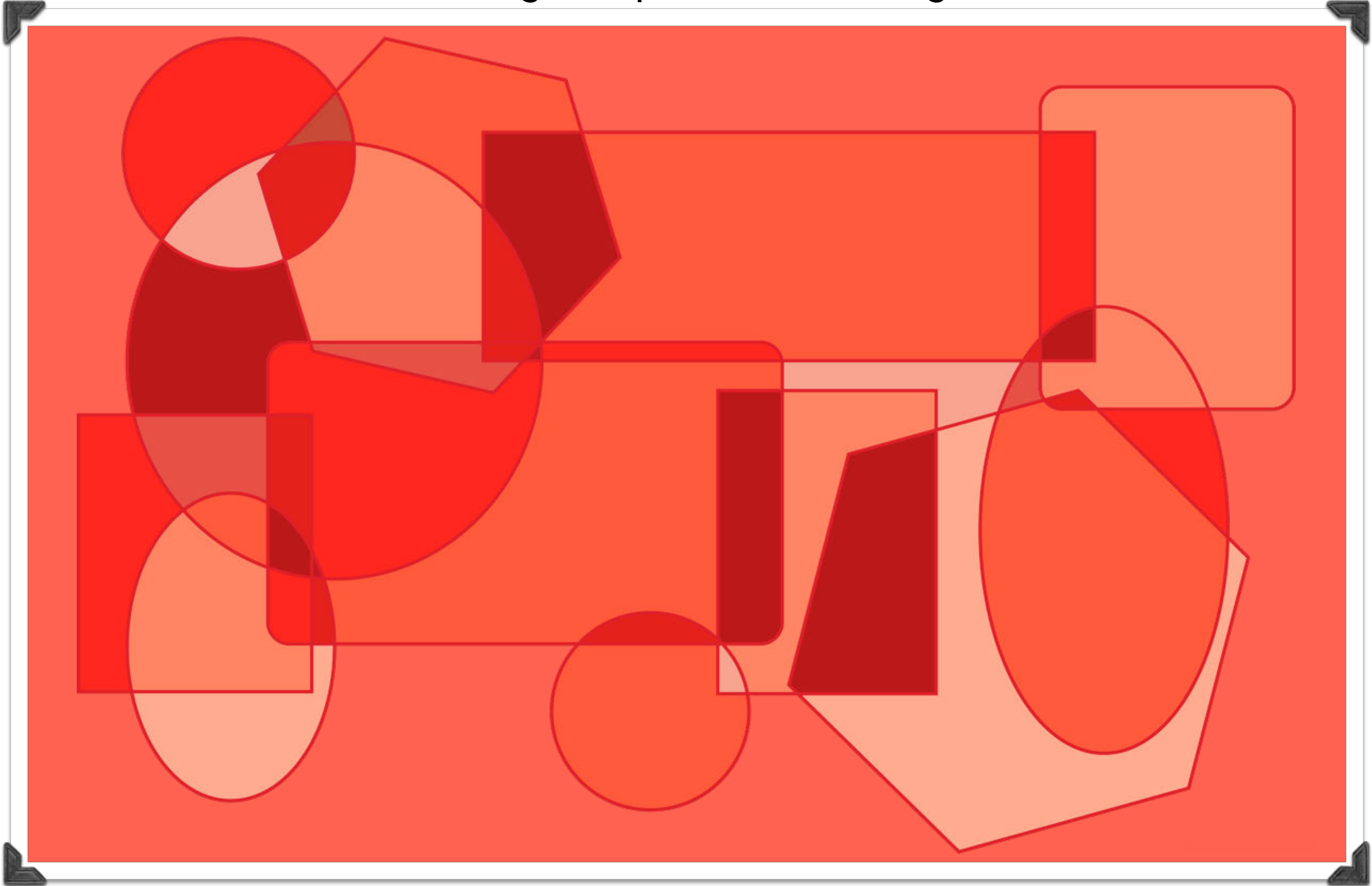


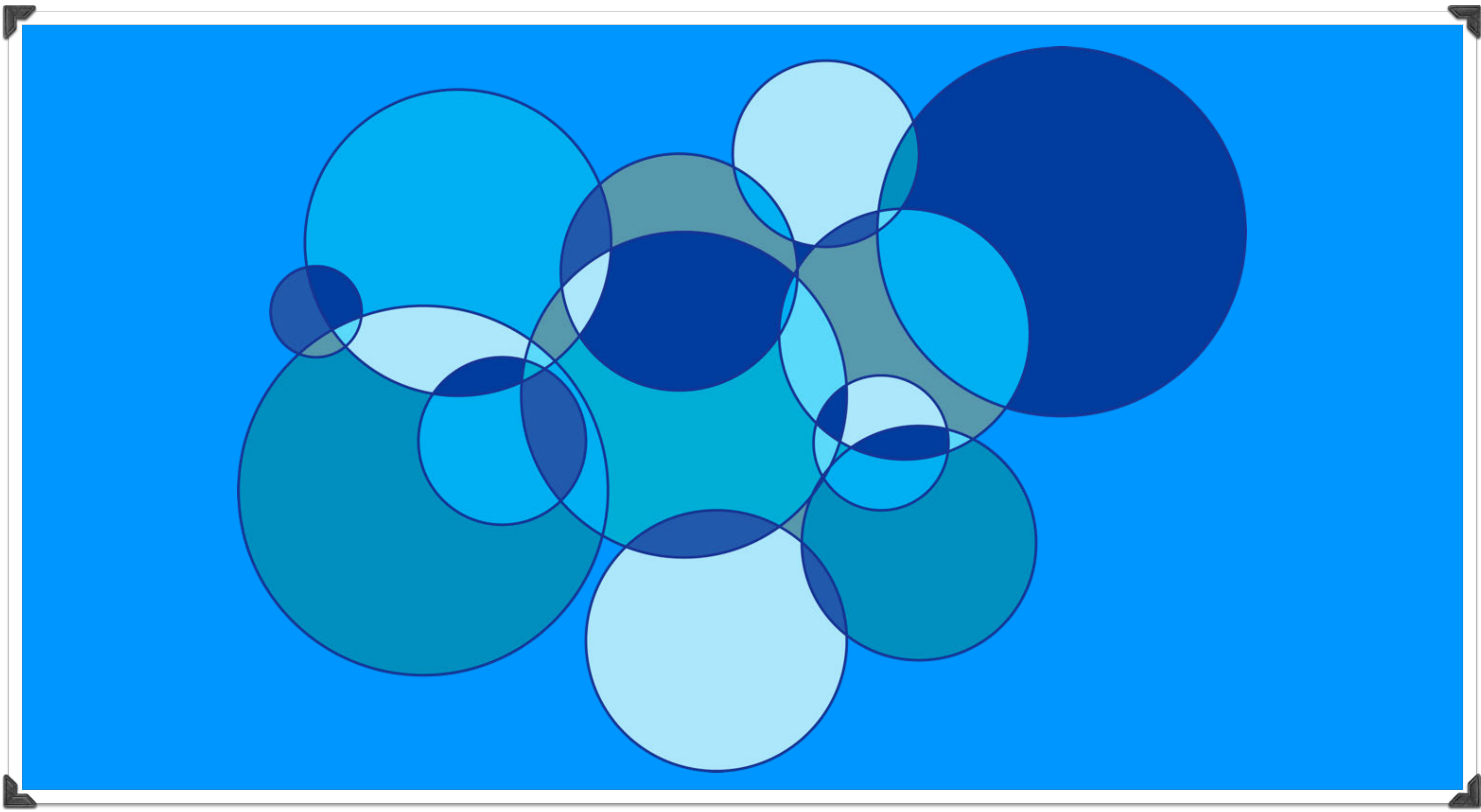
Using different shades of the same colour can be a really good way of creating fantastic works of art. Let's have a look at some examples...

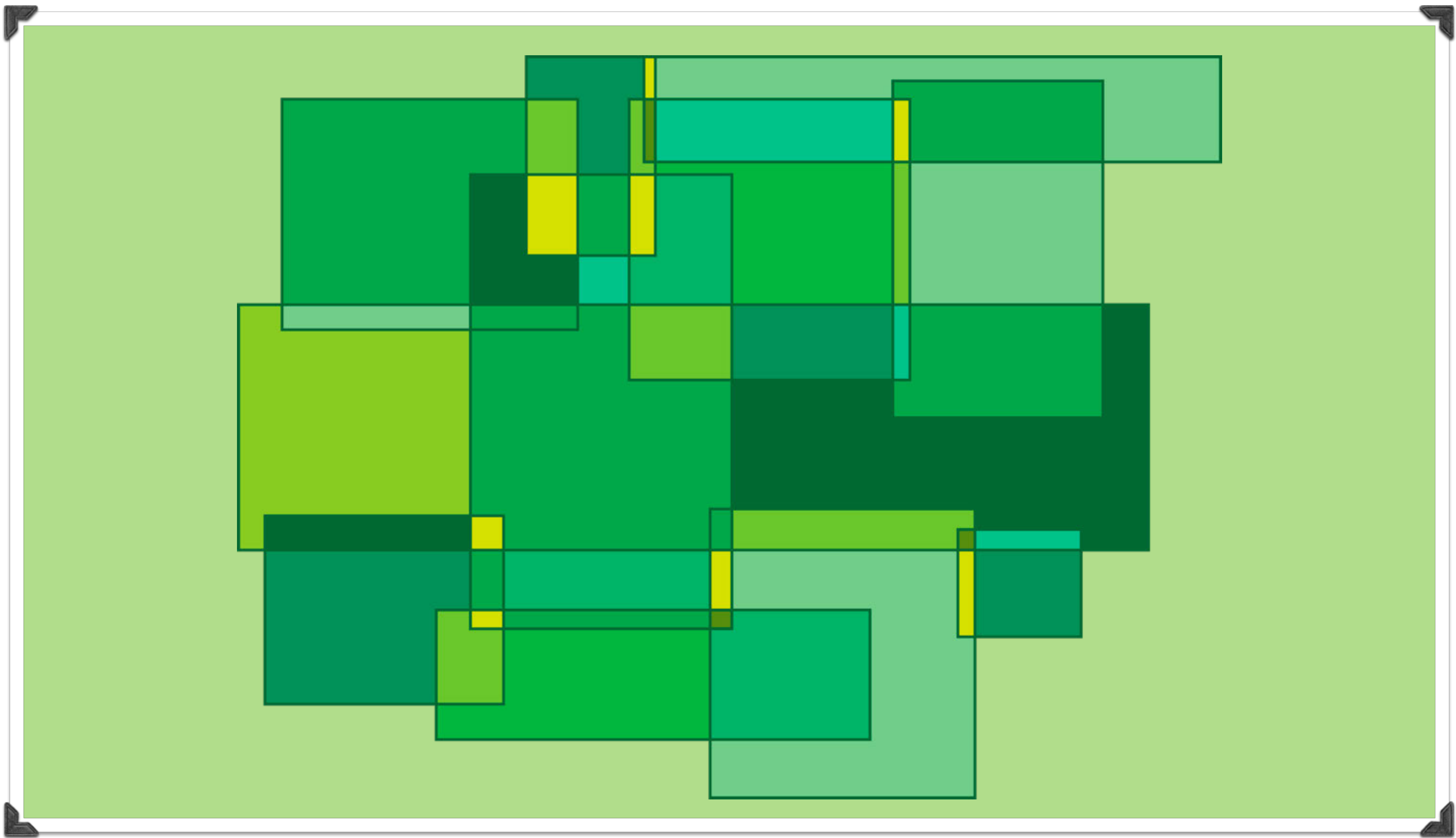




The sections in these overlapping shapes have all been painted in different shades of red. You can do this with any shapes and in any colour.







You can also paint objects, people or scenes in one colour. You can create light and dark areas by changing the shade of the paint.



Are you ready to try
some one-colour art of your
own?

