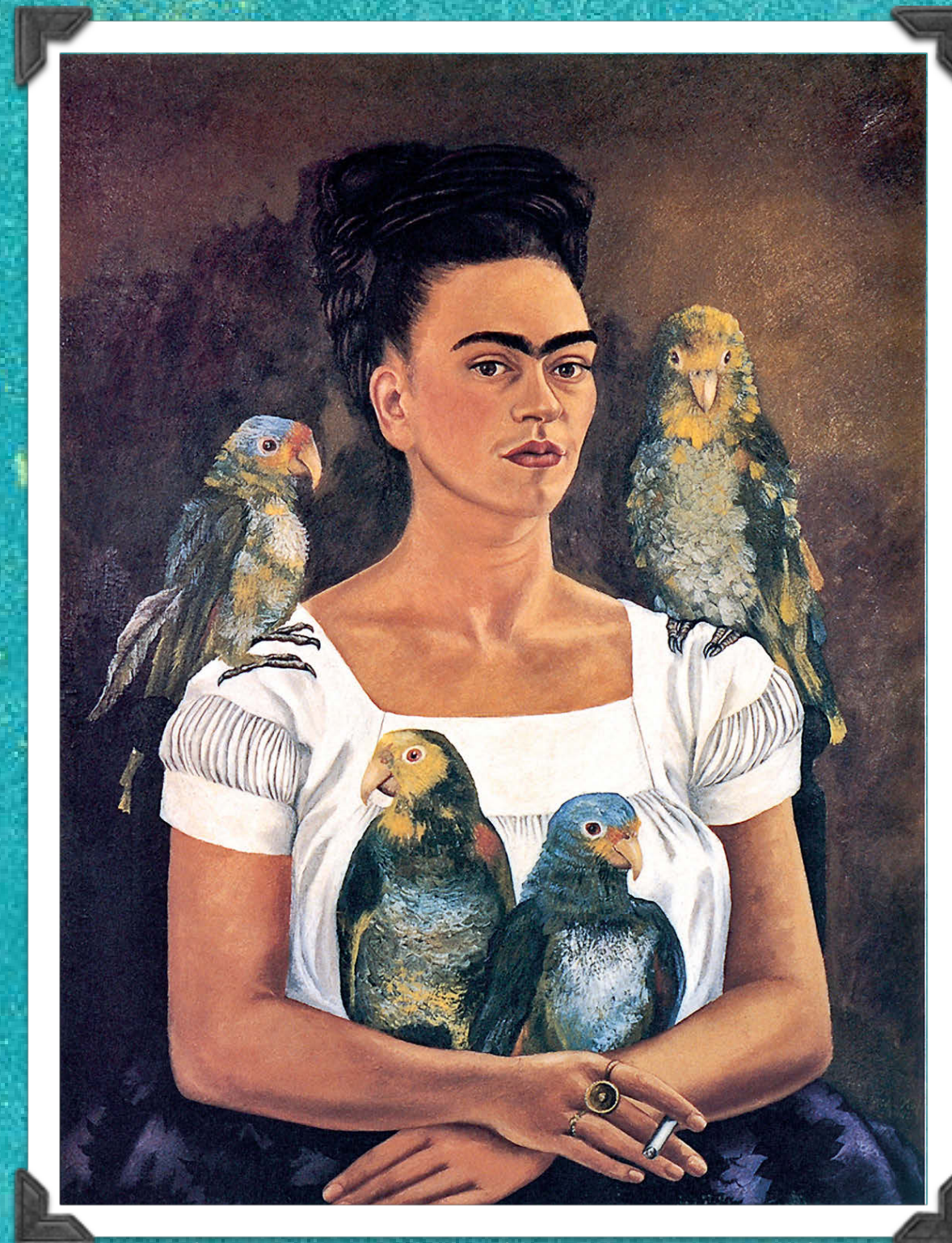
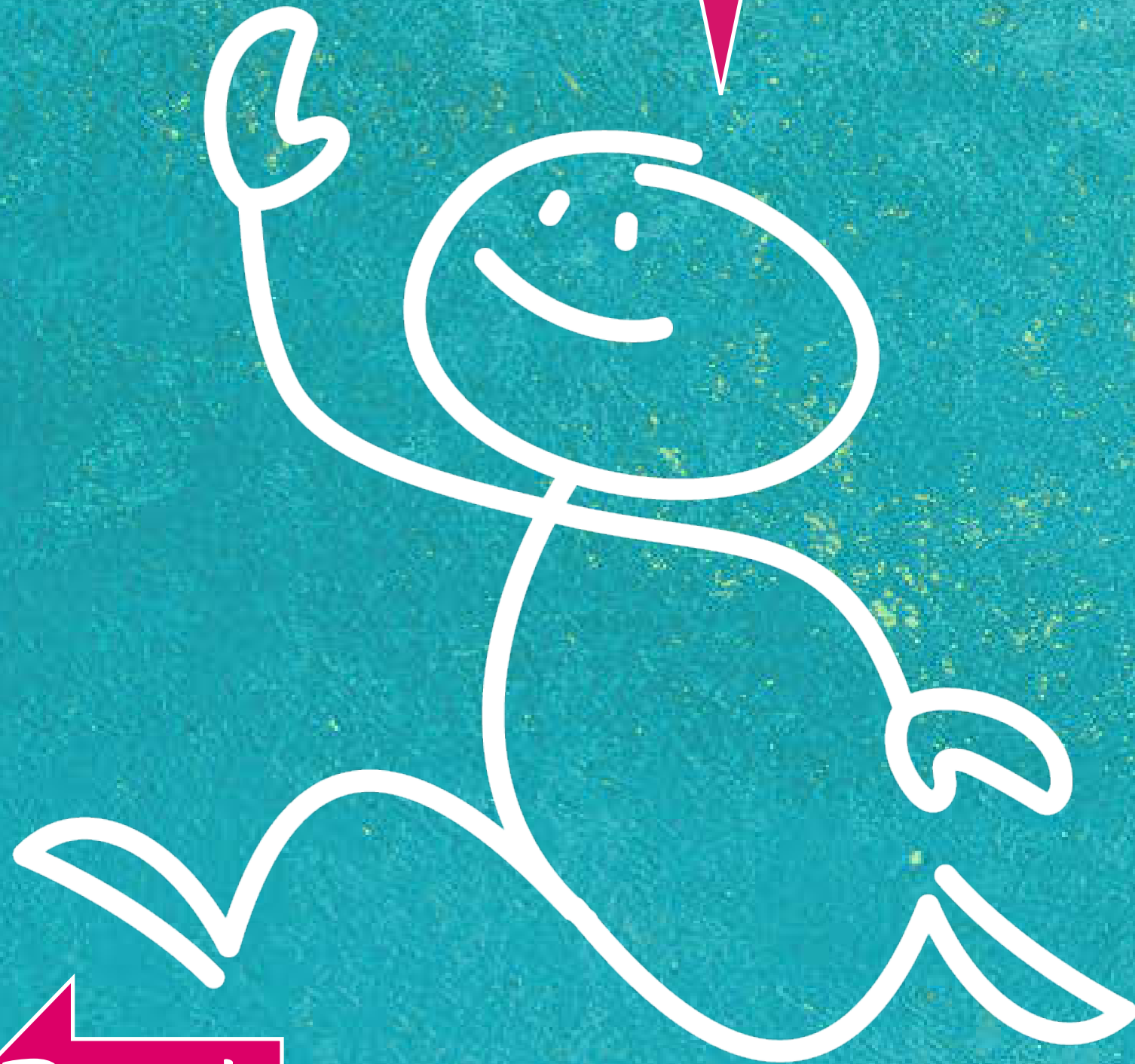




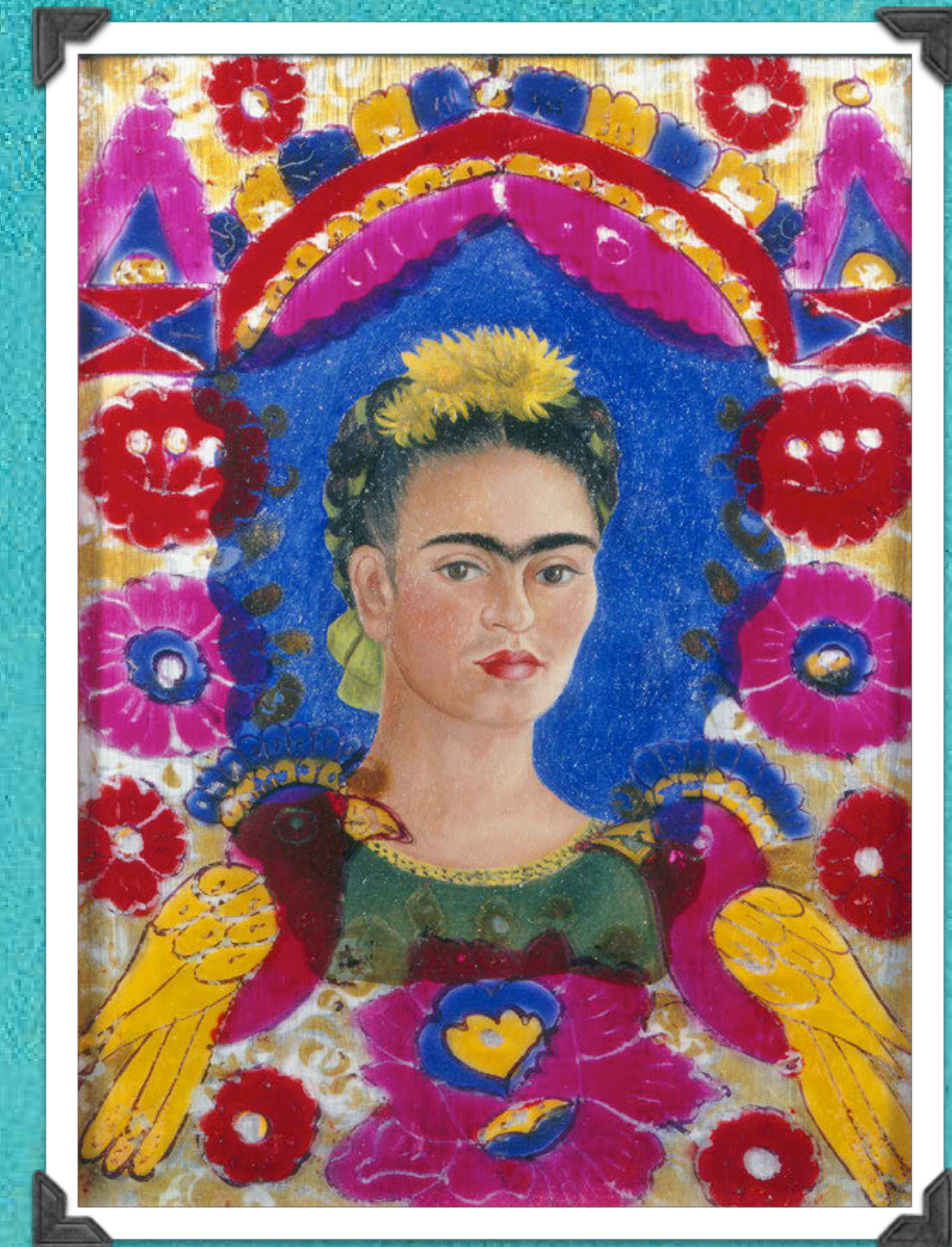
Learning Objective:
To study the self portraits of Frida Kahlo.

Think back to last lesson when you studied some of Frida Kahlo's artwork.

Tell your partner one thing you liked about her work and one thing you didn't like.



Libby Rosof - Image 9 via <https://www.flickr.com/photos/libbyrososof/2267036055>
www.planbee.com

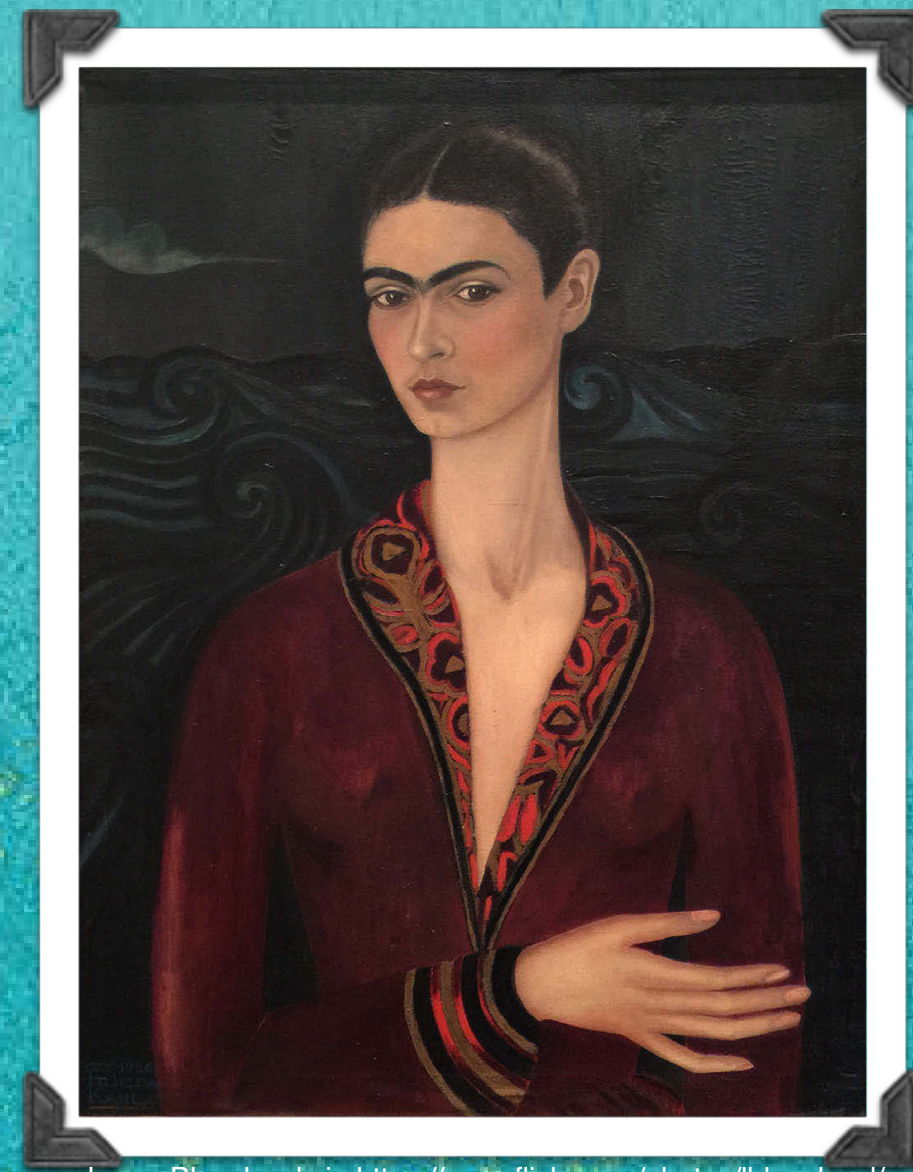
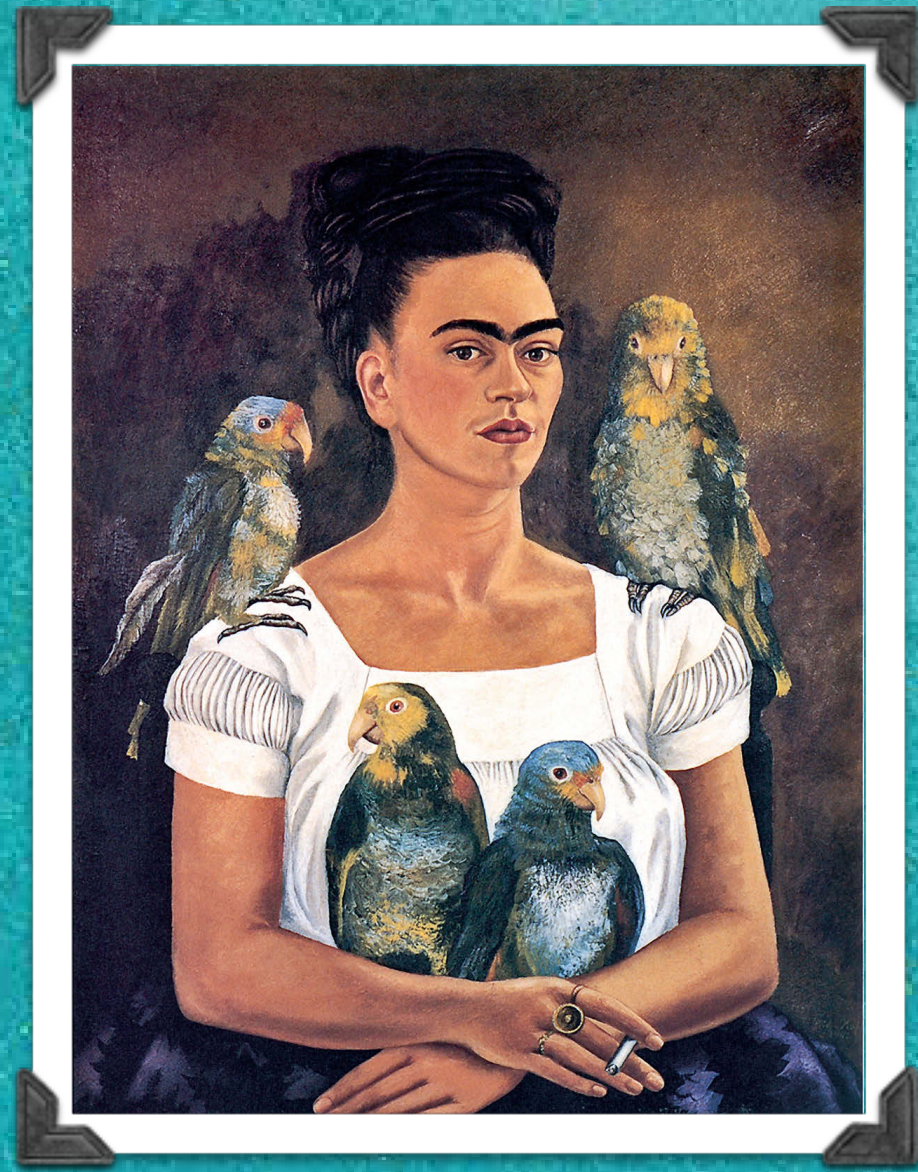


Libby Rosof - Image 8 via <https://www.flickr.com/photos/libbyrososof/2267821650>

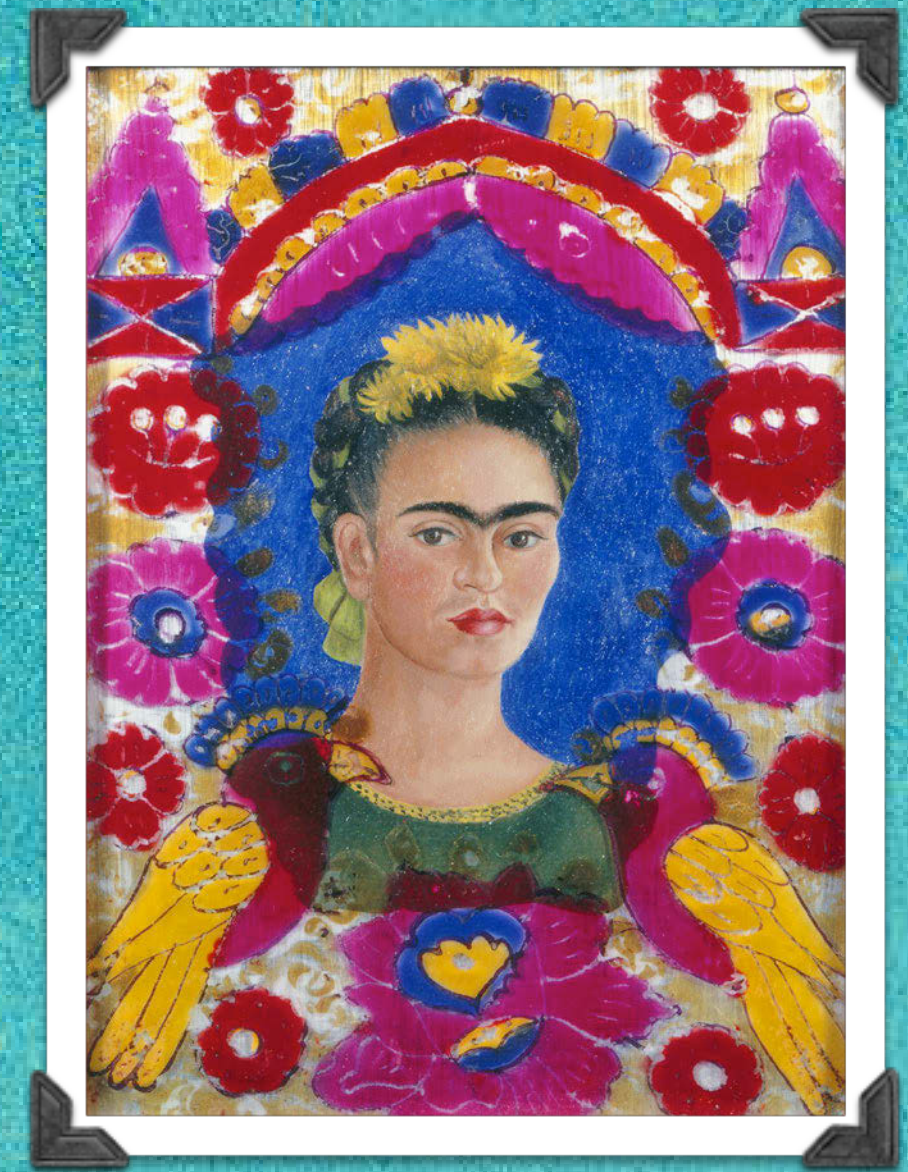
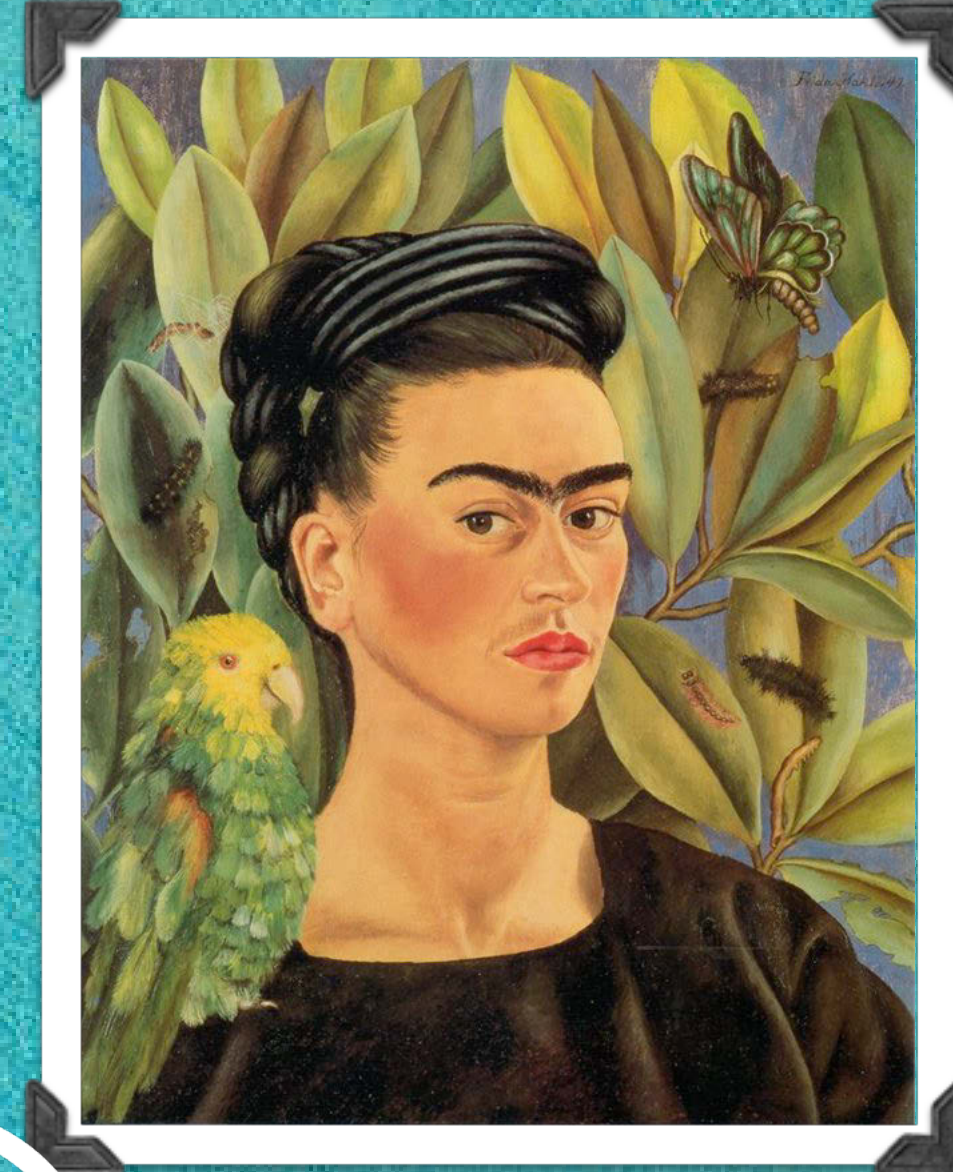
Back

Next

Do you notice anything similar about each of these paintings?

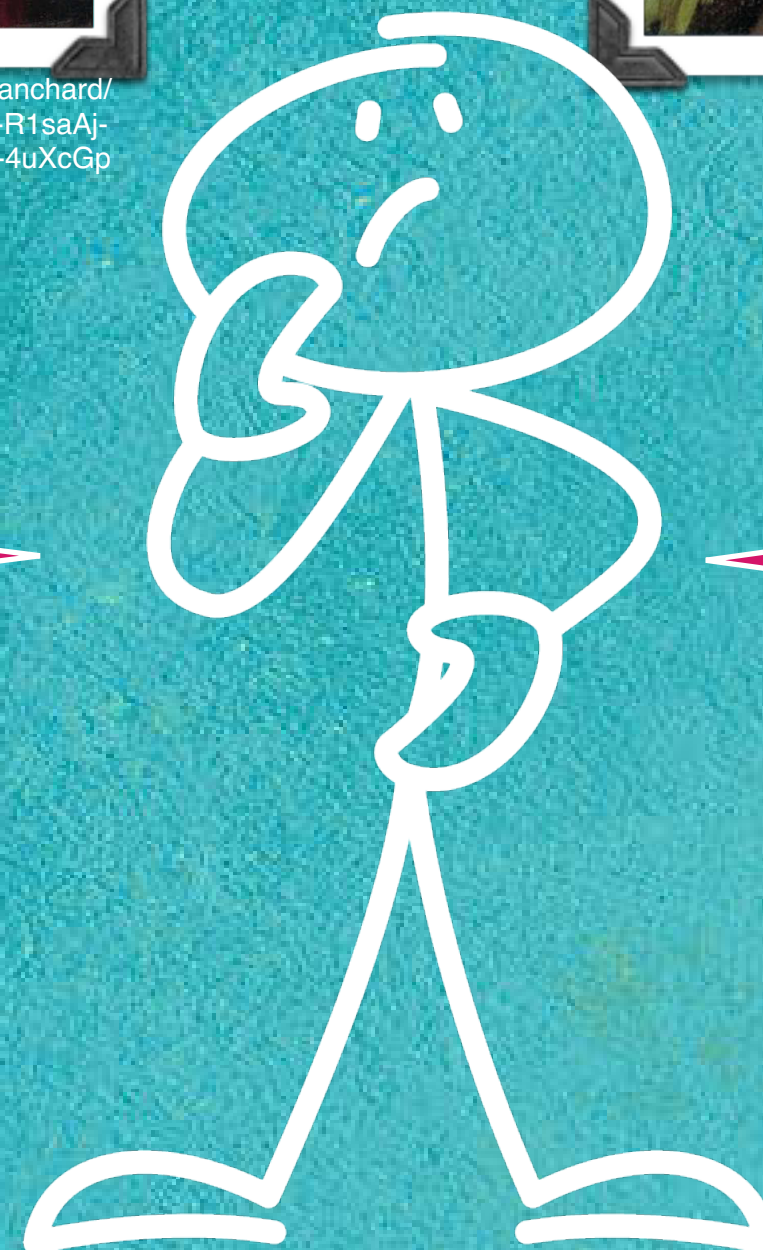


Laura Blanchard via <https://www.flickr.com/photos/blanchard/31788654030/in/photolist-R1sb3b-R1saMS-R1saHd-R1saAj-R1sanU-Rp8iYT-QmcyEB-Rp8sSV-Qr4akU-m9pLVc-4uXcGp>



What is in a lot of her paintings?

What is this kind of painting called?



Back

Next

Kahlo is most well known for her striking self portraits. A self portrait is a picture an artists paints or draws of themselves.



‘I paint self portraits because I’m so often alone, because I am the person I know best.’

Did you know that 55 of her 143 known paintings are self portraits?

Back

Next

Kahlo also did many portraits of other people including her friends and family. A portrait is a picture an artist paints or draws of someone else.

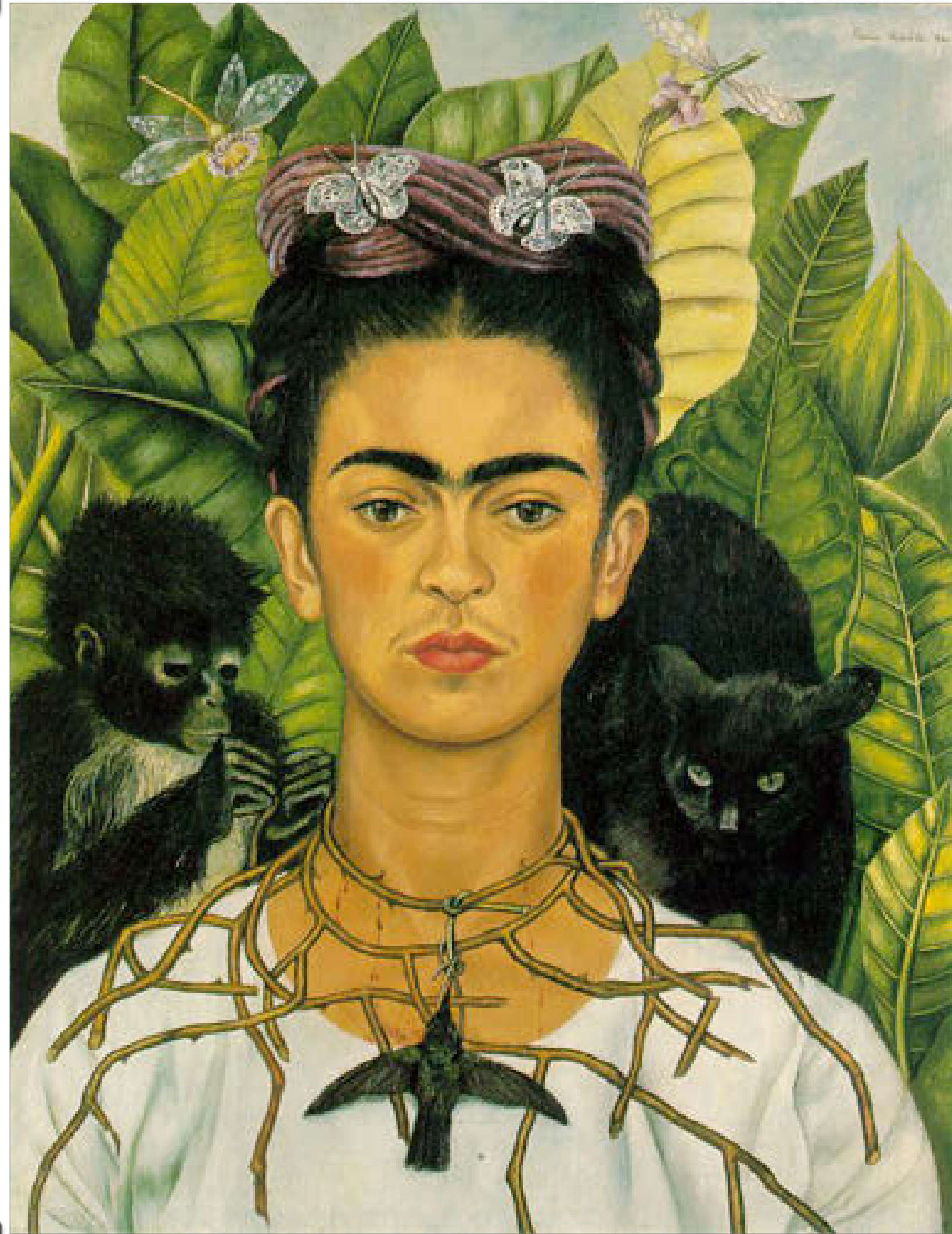


Did you know
Kahlo would give
portraits as
payment for things?
She once paid her
dentist with a self
portrait she'd done.



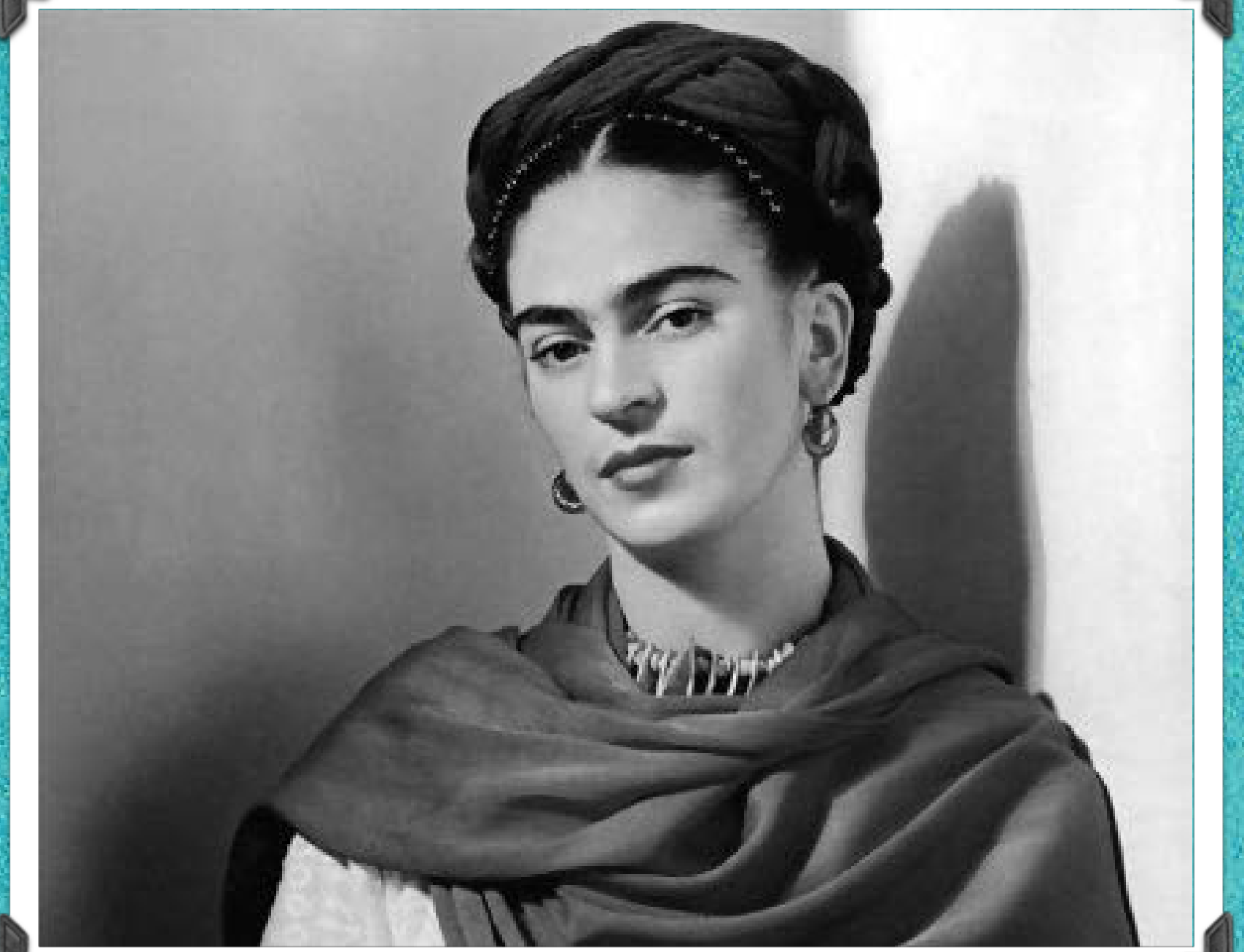
Back

Next



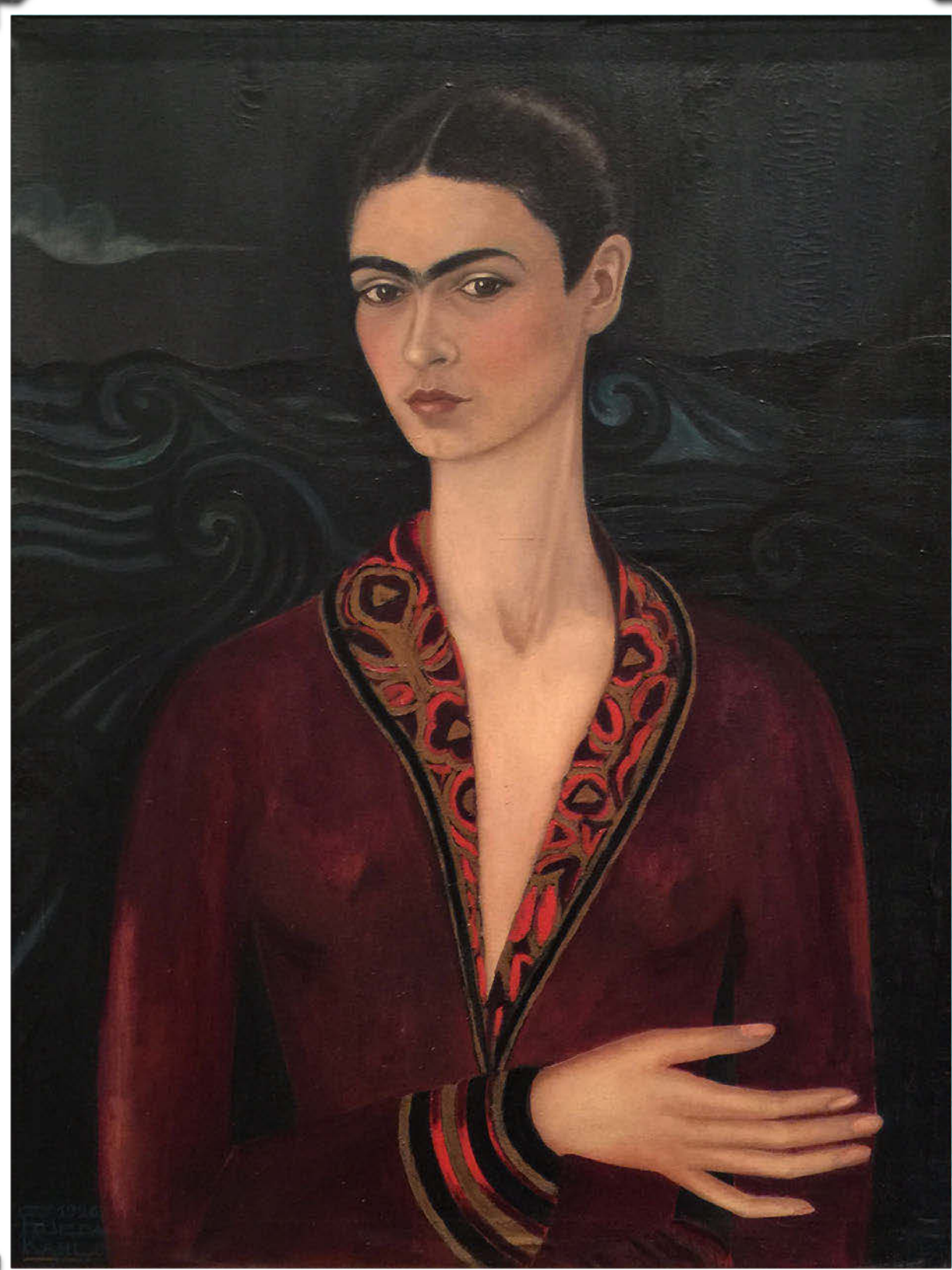
Cea+ - Frida Kahlo - Self-portrait with Thorn Necklace and Hummingbird (1940) via <https://www.flickr.com/photos/centralasian/5493700957>

Kahlo seemed to exaggerate some of her features in her self portraits. These strong features were part of her identity and she, and her paintings, are widely recognised because of them.



Back

Next



As she painted more and more portraits and self portraits, her paintings became more accurate and proportional. She discovered her own style of painting and how she wanted them to look.

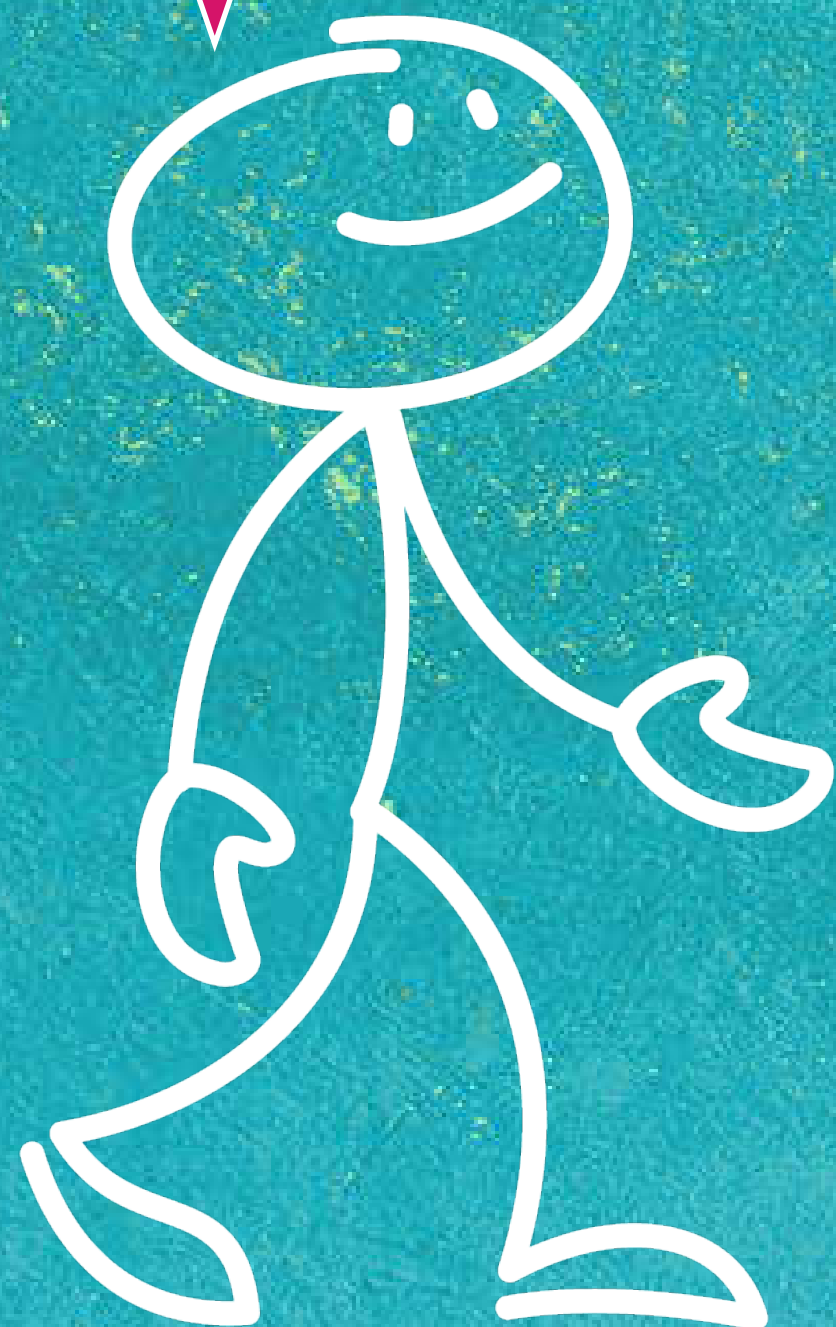


Back

What does proportional mean?

Next

A proportional portrait will have all the features the correct size and in the correct place.



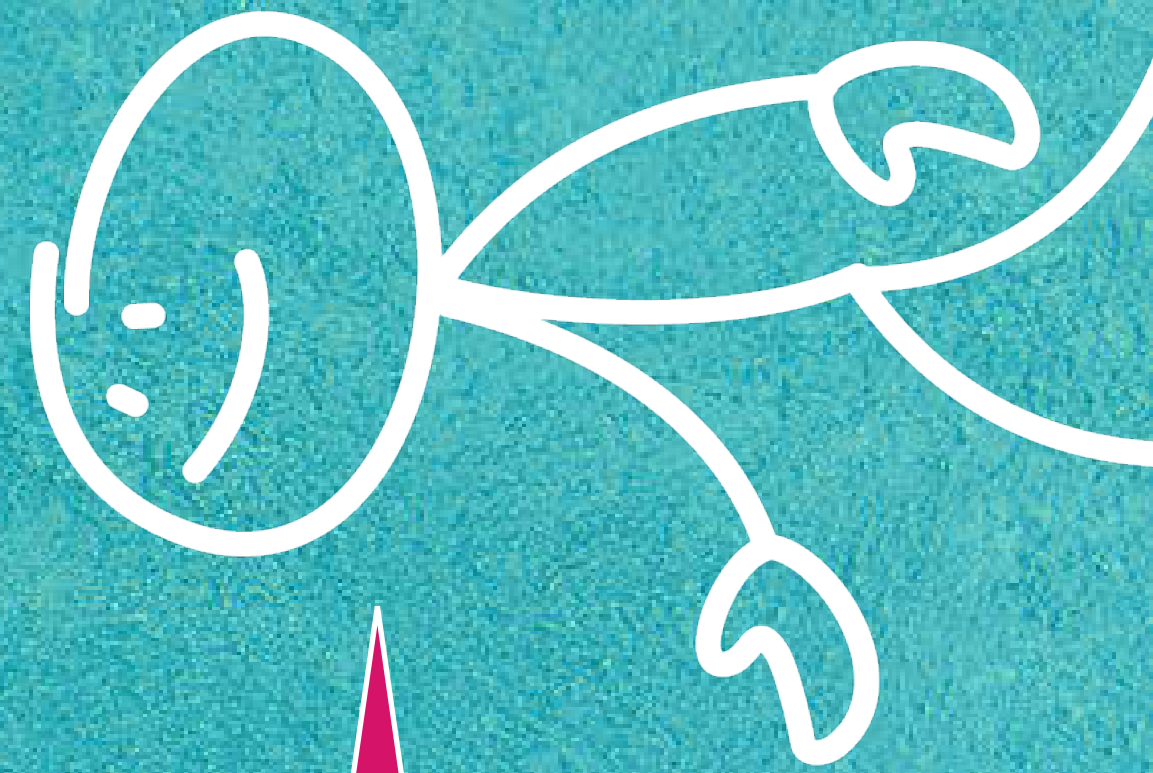
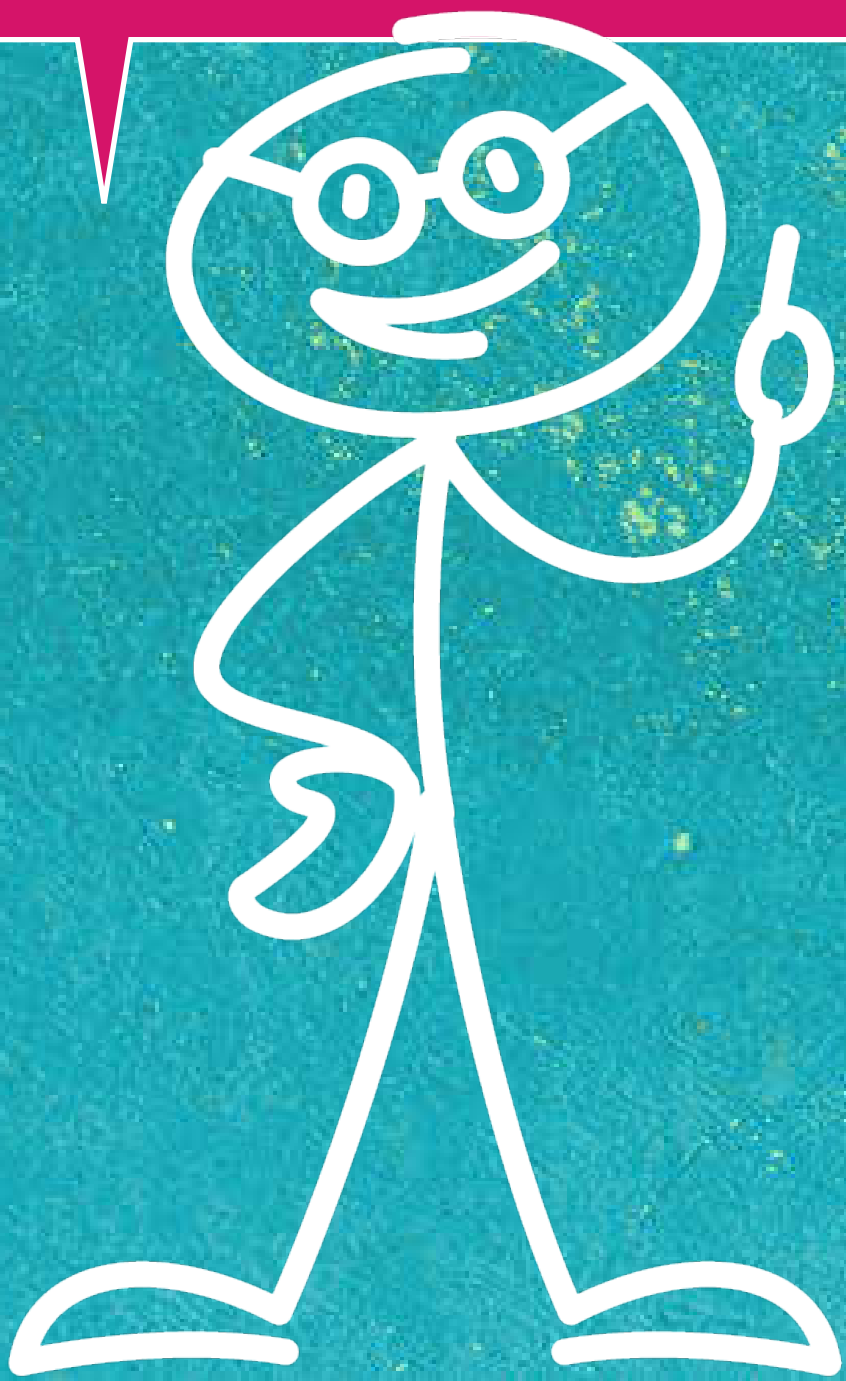
Have a look at your partner's face or in a mirror. Where are the eyes, nose and mouth on the face? How do they compare to each other?

Back

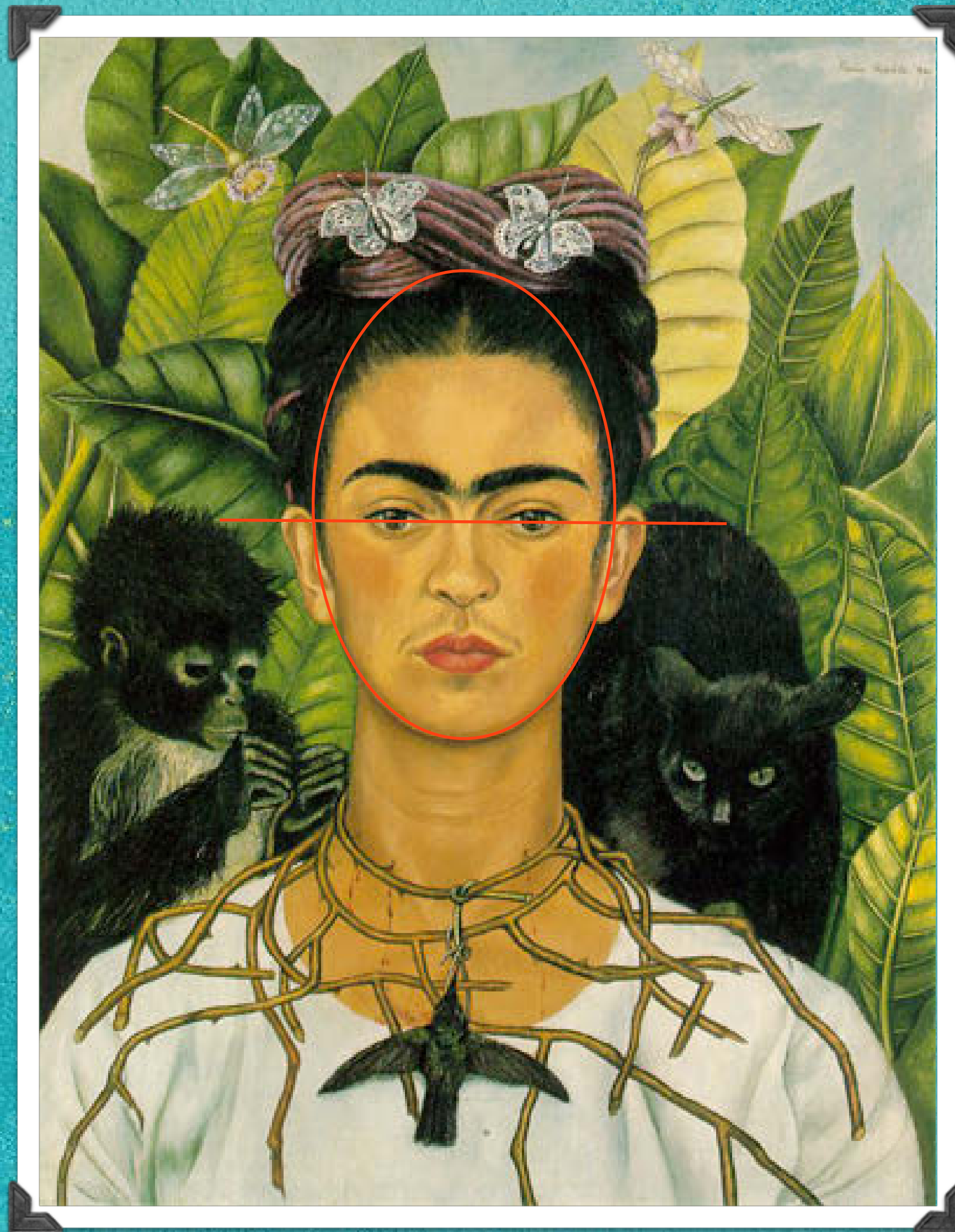
Next

To draw a proportional face you need to look at the whole head.

The eyes are actually about halfway down someones head.

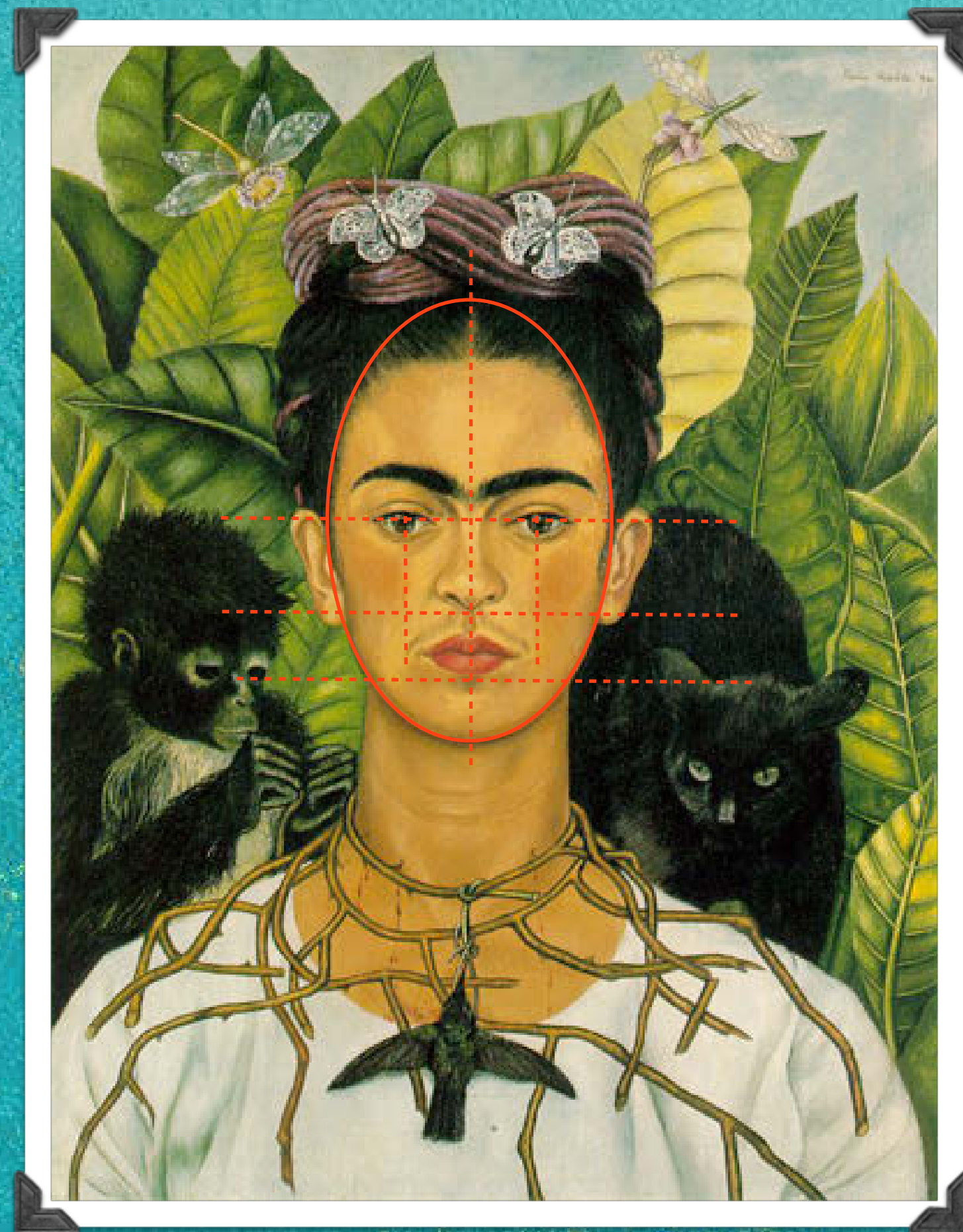


Can you spot any other guidelines you could put in? Where is the nose?



Back

Next



- The nose should be in the centre of the face so a guideline down the middle helps.
- The end of the nose comes halfway between the chin and the eye line.
- The bottom lip should rest on a line halfway between the end of the nose and the chin.
- The corners of the mouth should be in line with the pupils of the eyes.

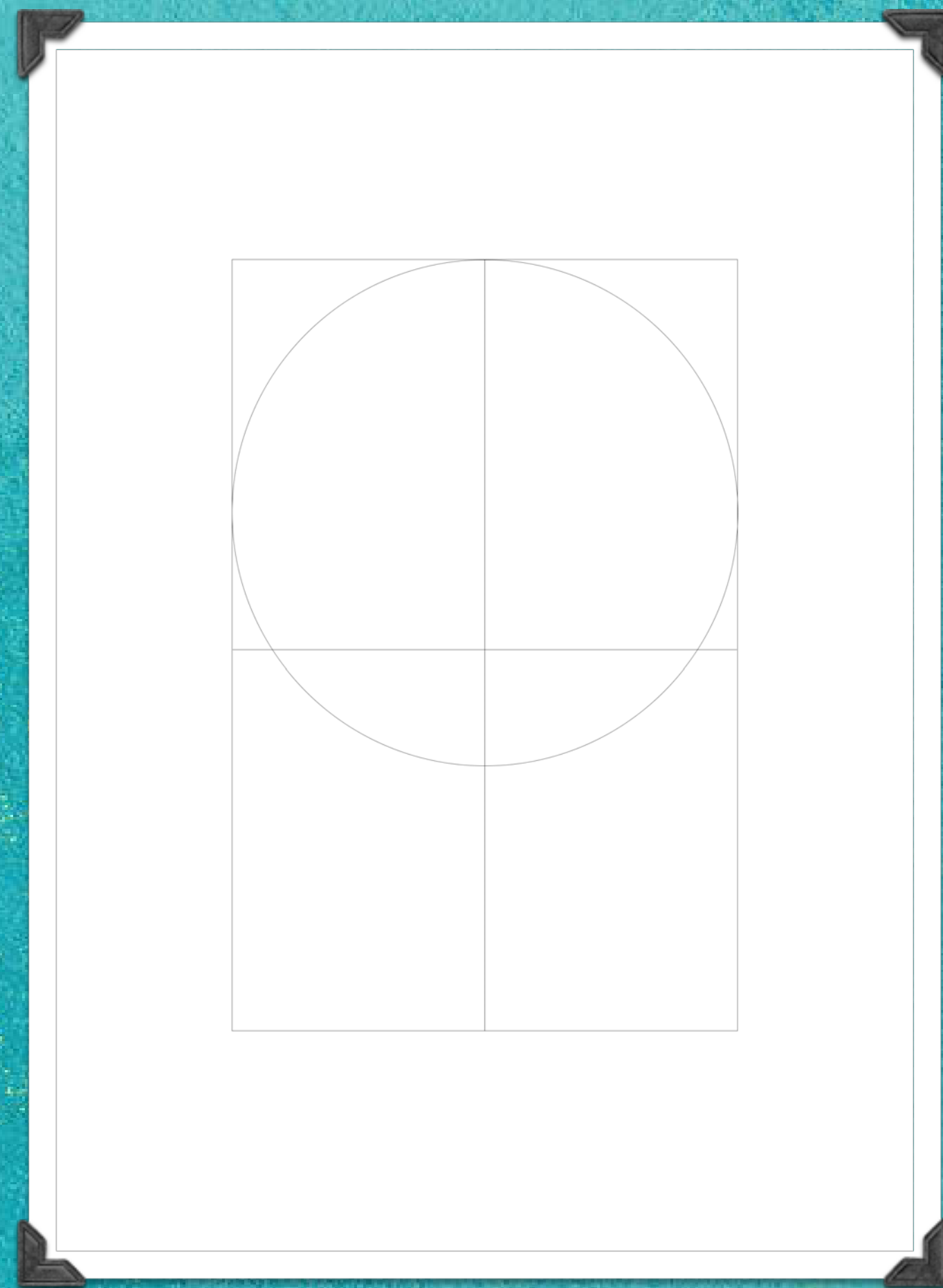
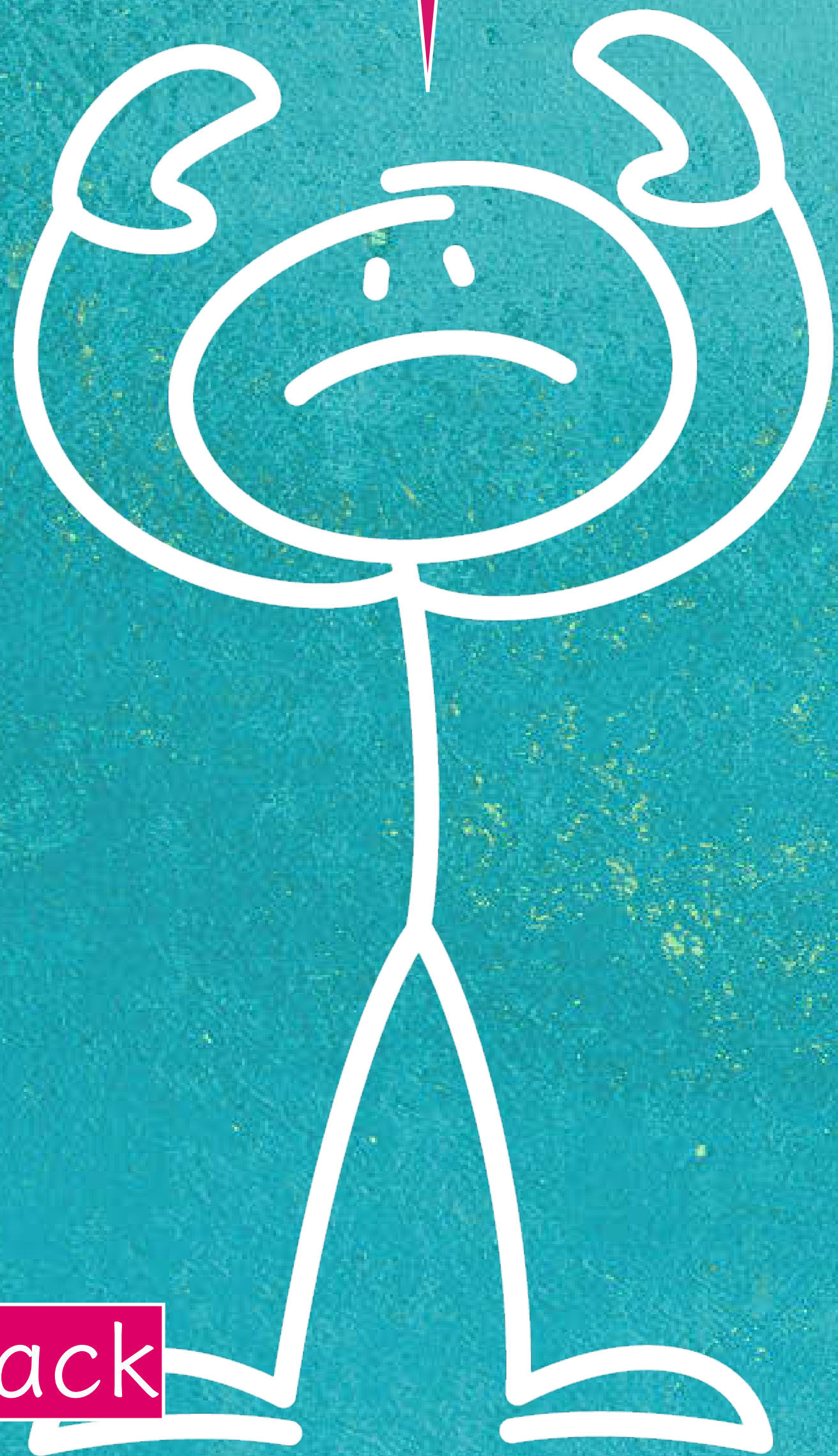
These are just guidelines. Everyone's face will be different and many won't match up to these proportions exactly.



Back

Next

It's tough to know where to start!

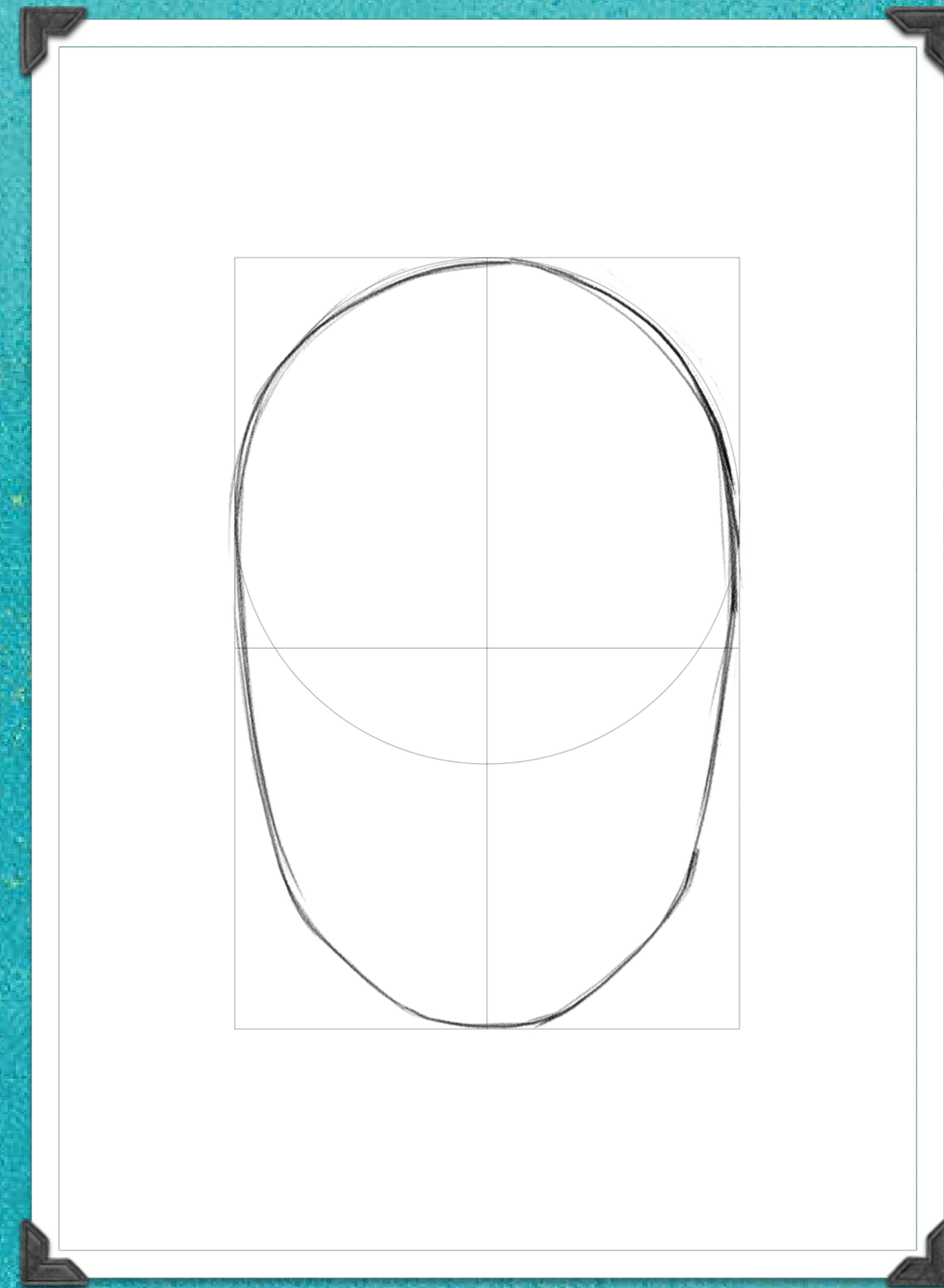
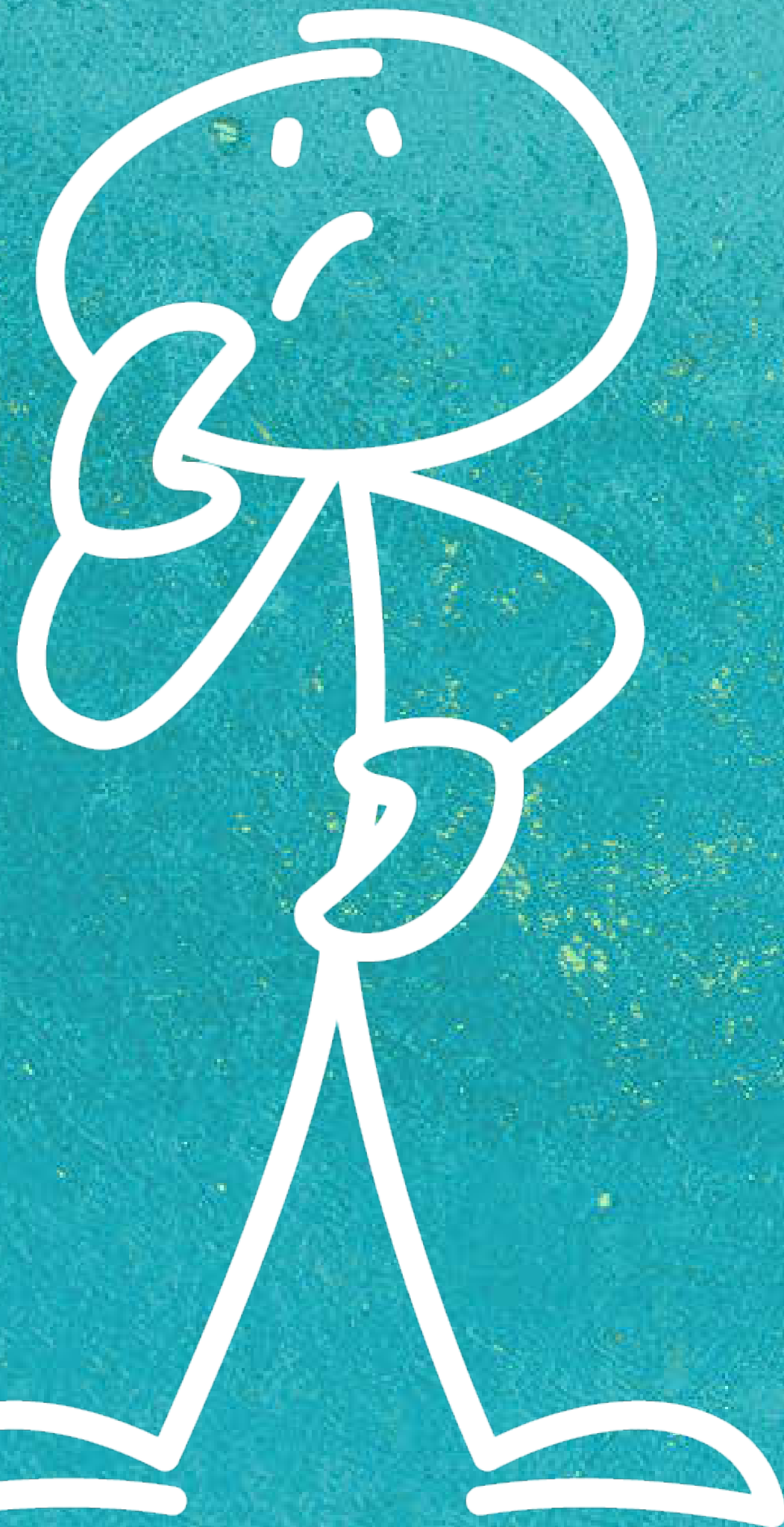


Begin by sketching a rectangle and splitting it into quarters. Draw a rough circle inside your rectangle. It should be bigger than half of your rectangle.

Back

Next

Can you see where the eyes are going to go?



Sketch in the shape of
your face so it fits
inside the rectangle
you drew before.

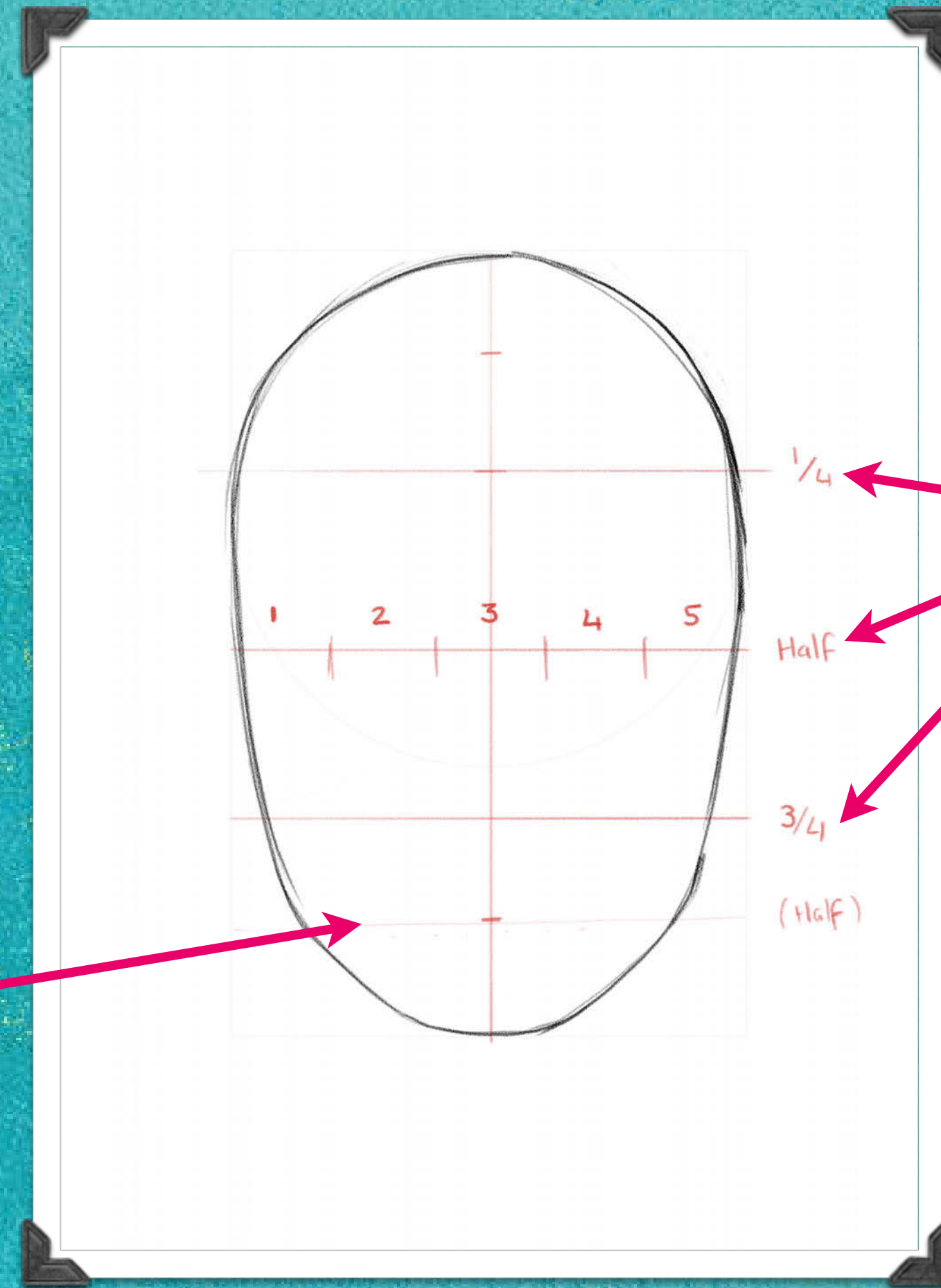
Back

Next

It's really important to sketch your guidelines lightly enough so you can rub them out.



This line is for the lips.



Add in your guidelines.
The rectangle you drew should be split into quarters.

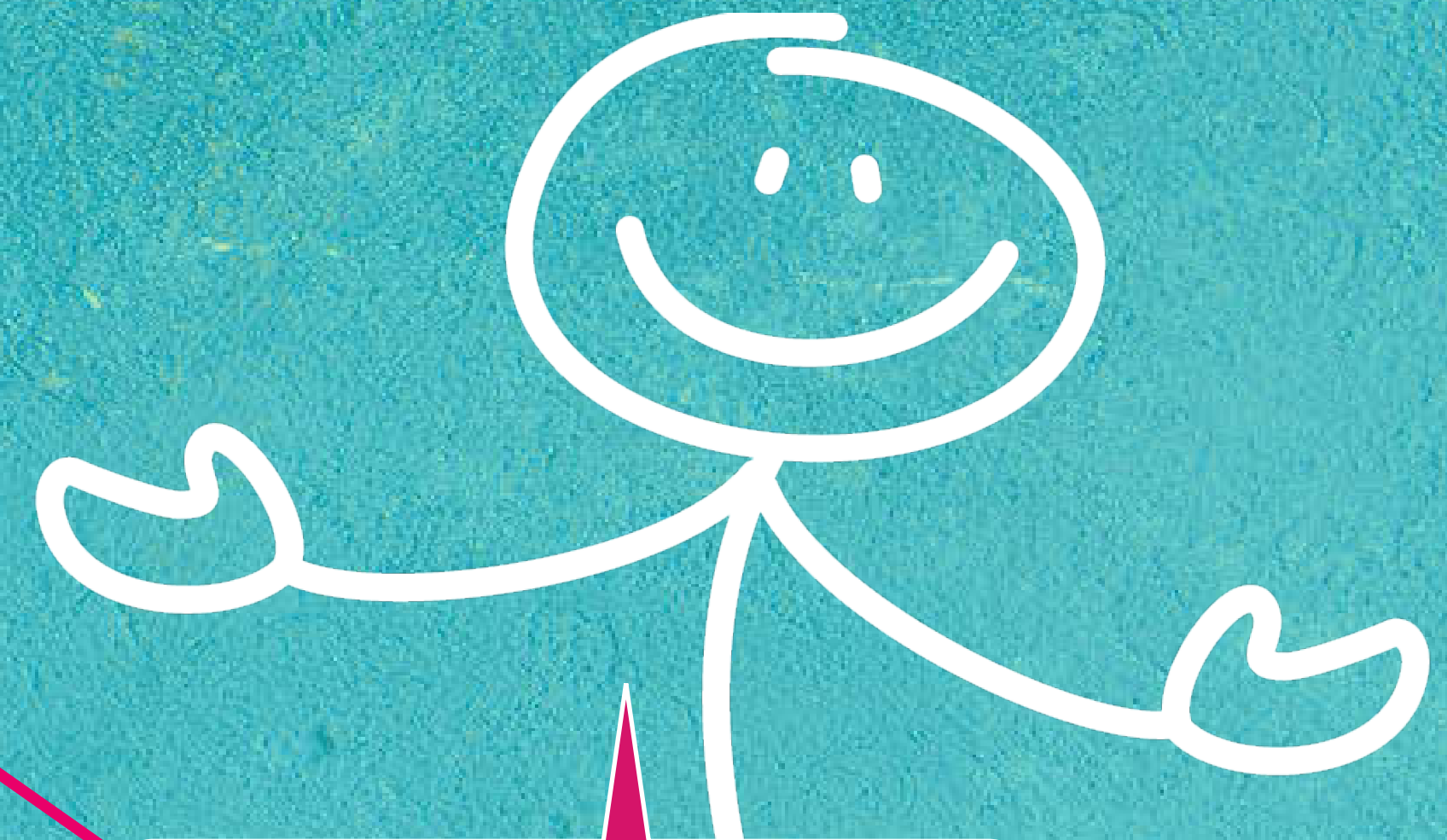
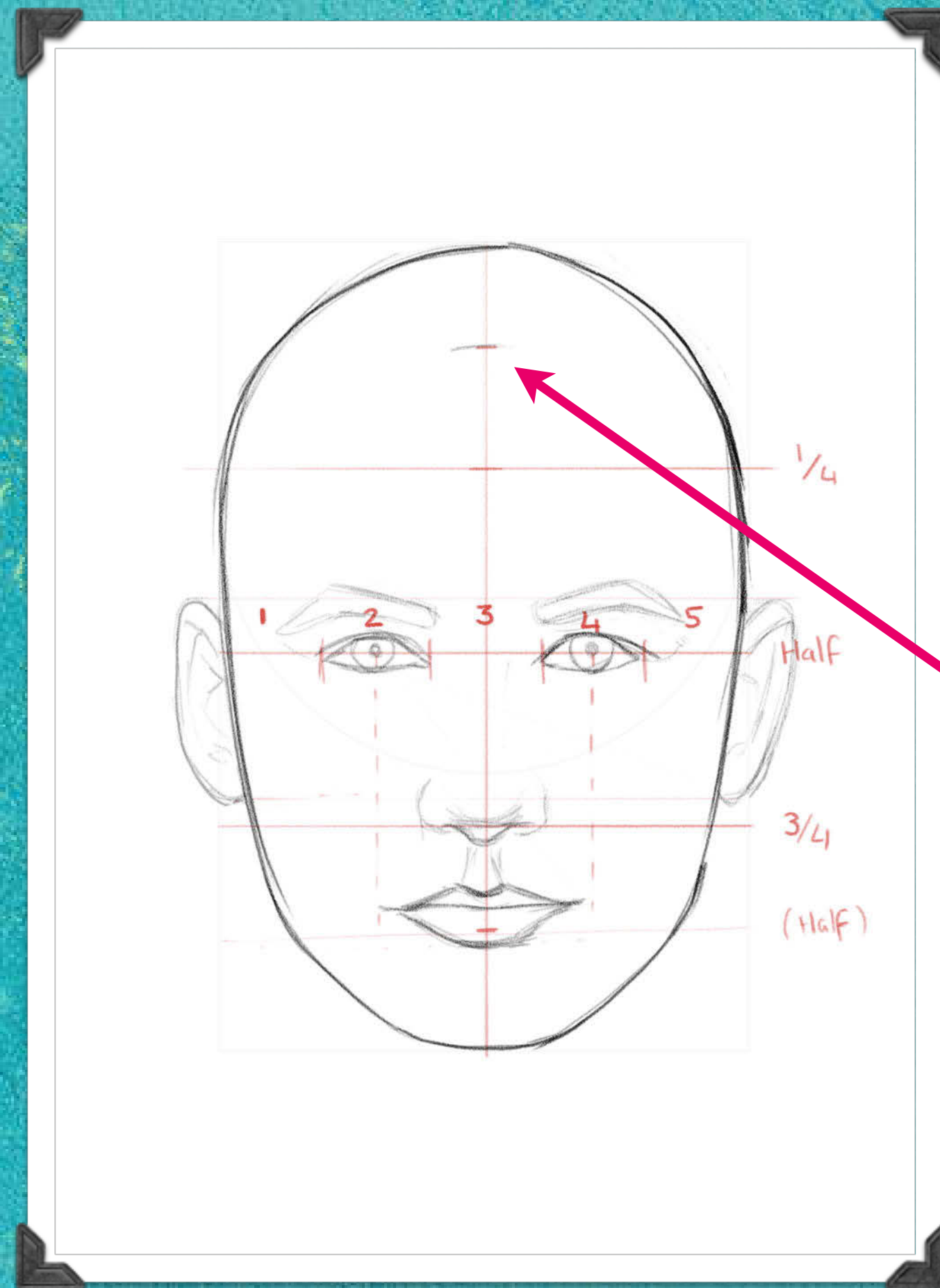
To draw your eyes proportionally you may like to split your face into fifths along the halfway line.

Back

Next

Take your time with this step. Remember that the eyes, ears and eyebrows don't have to be exactly the same. If one feature is too tricky, try another one and come back to it.

Start adding in your detail. Can you see how the features match up with the guidelines?

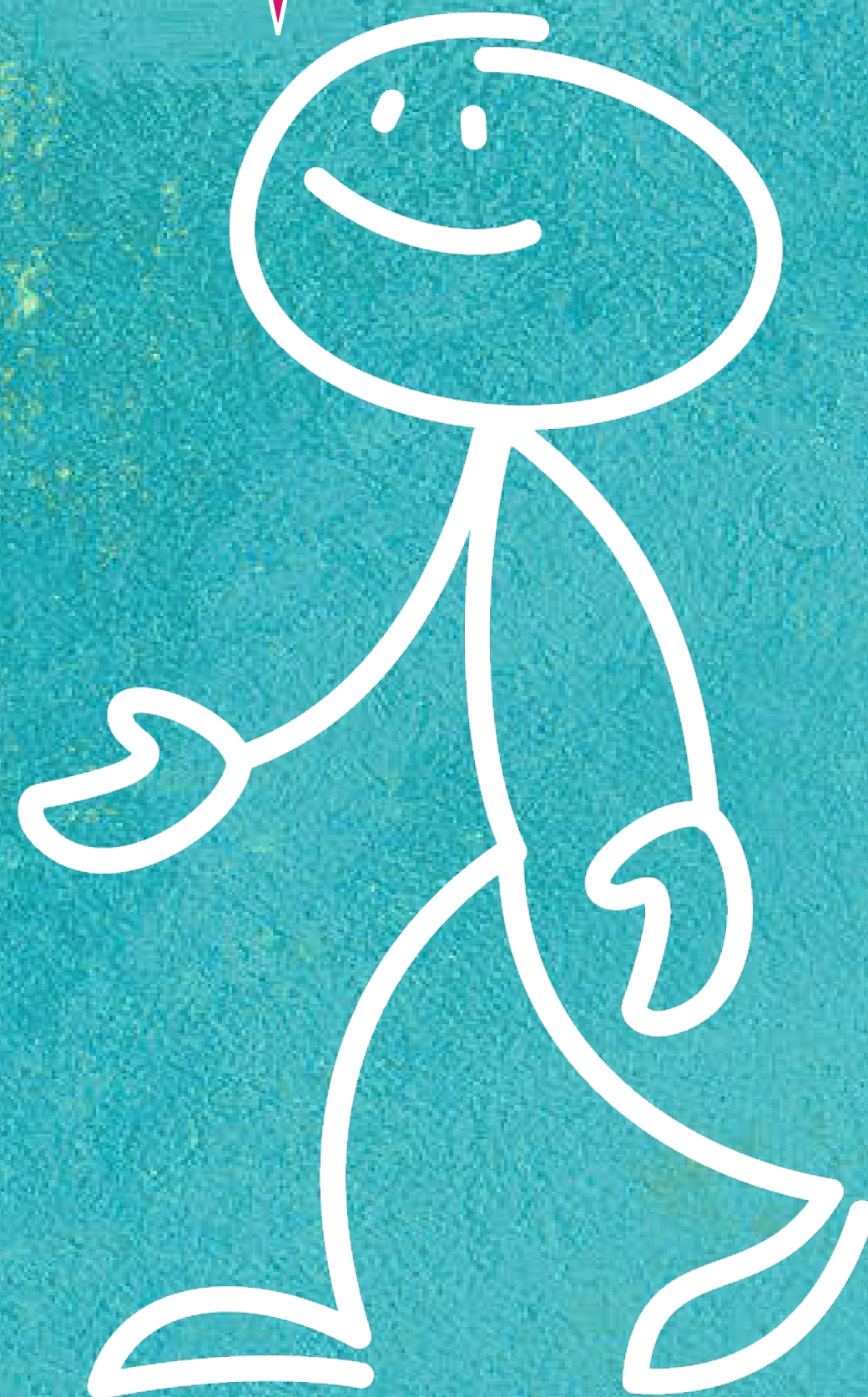
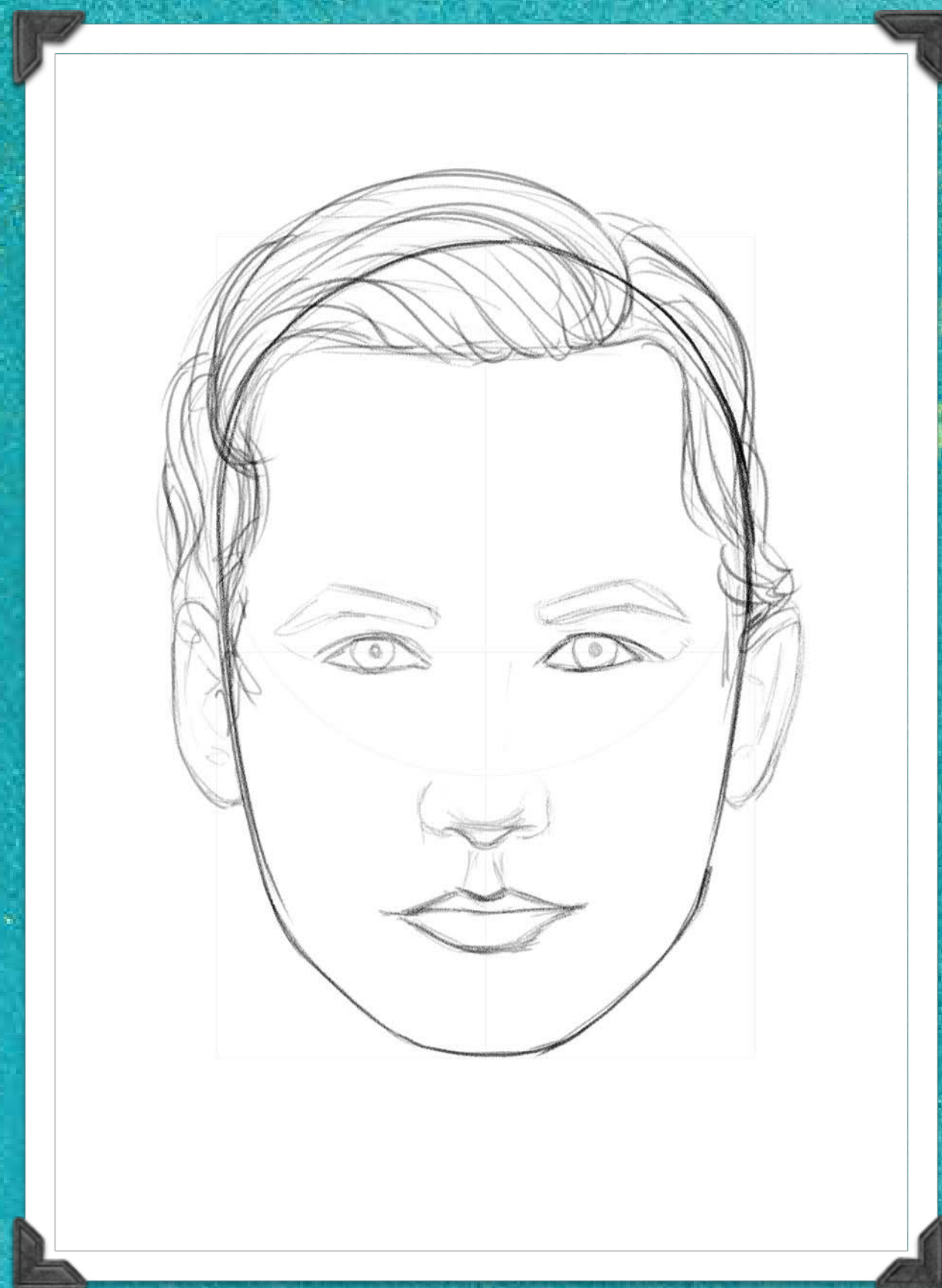


What might this line be for?

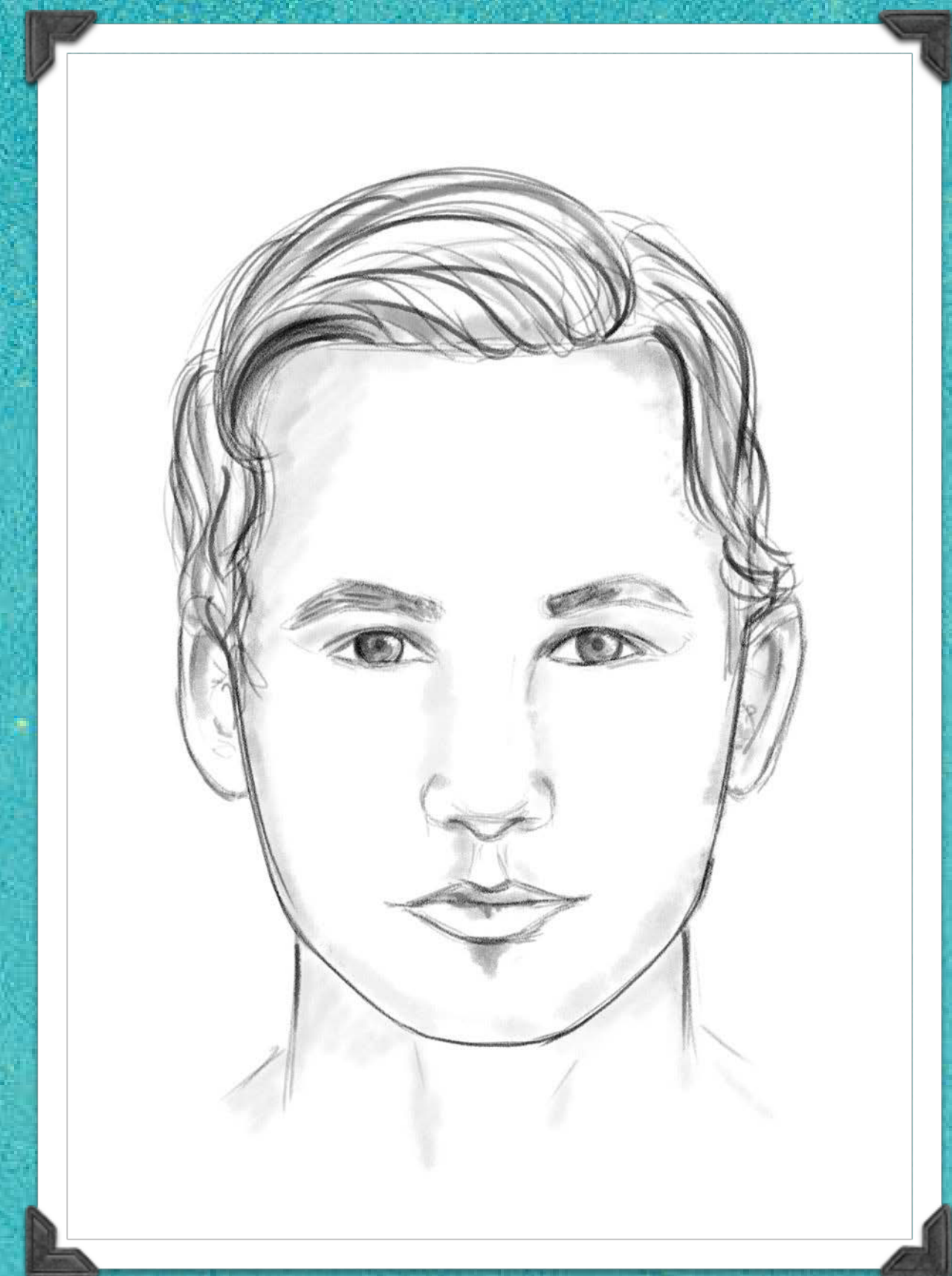
Back

Next

It's the hair line! Try drawing the shape of your hair first. Remember you don't have to draw every single hair! That would take forever! Rub out any guidelines you don't need anymore and then you can finish any details.



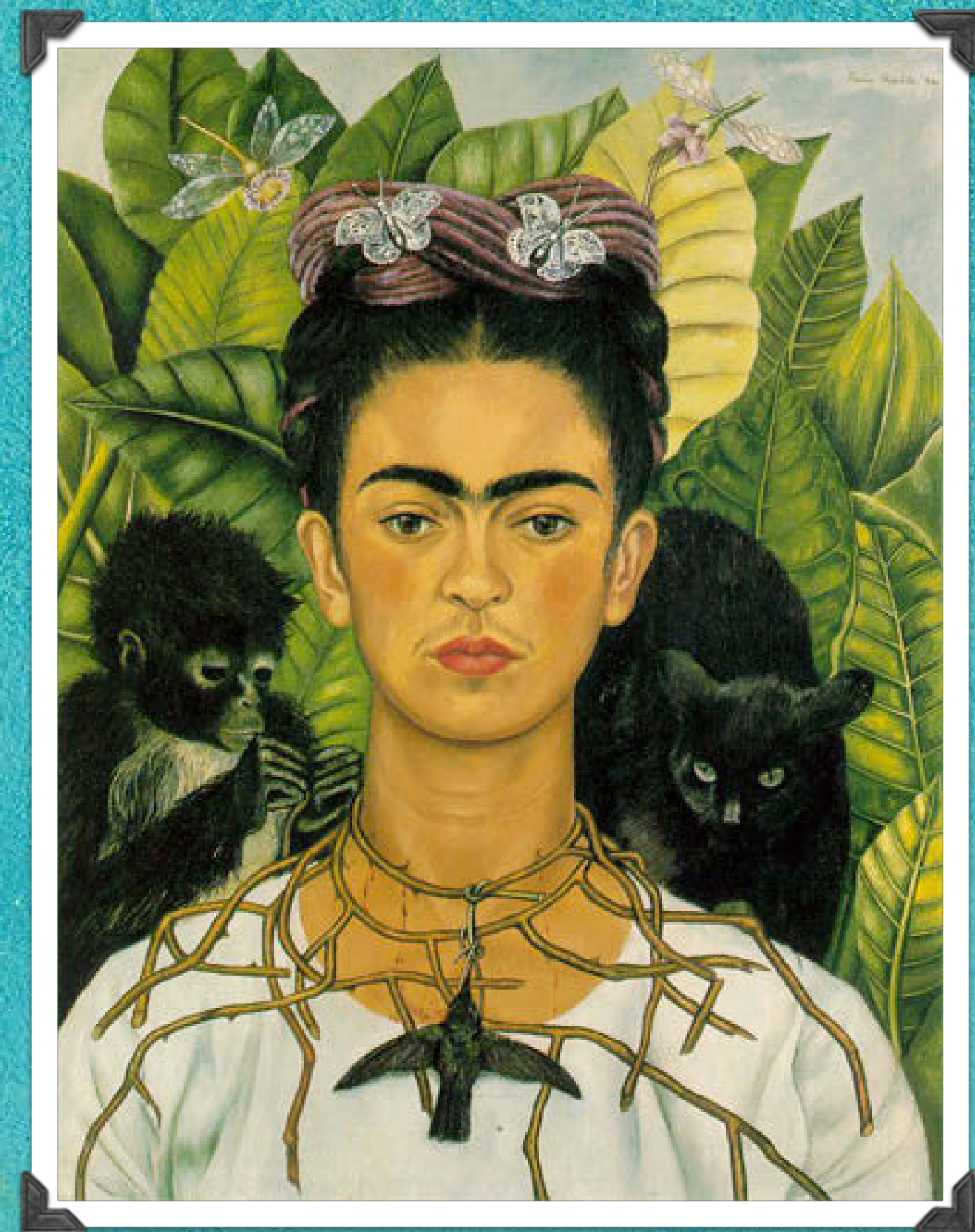
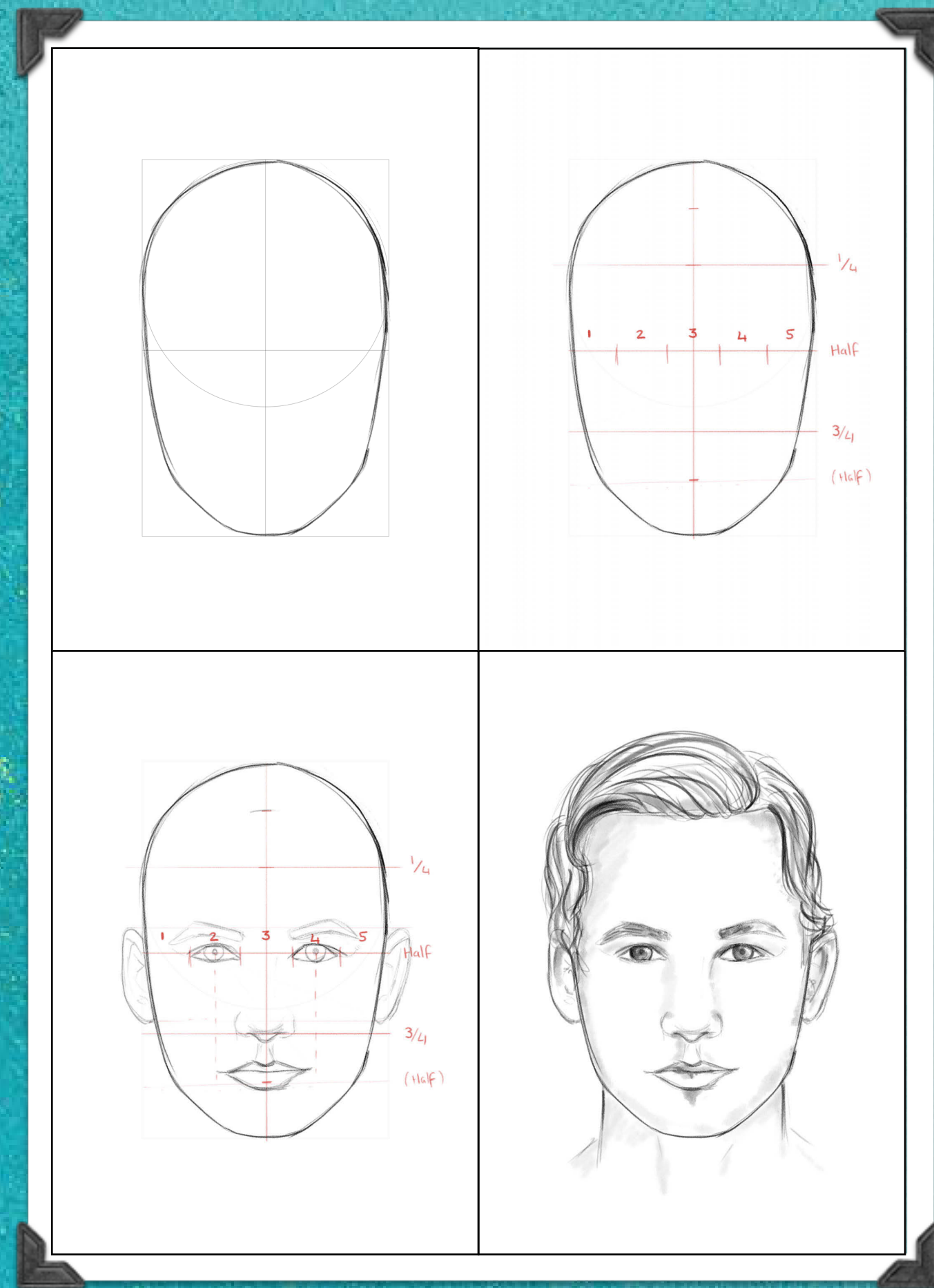
www.planbee.com



Back

Next

Are you ready to try a proportional self portrait?



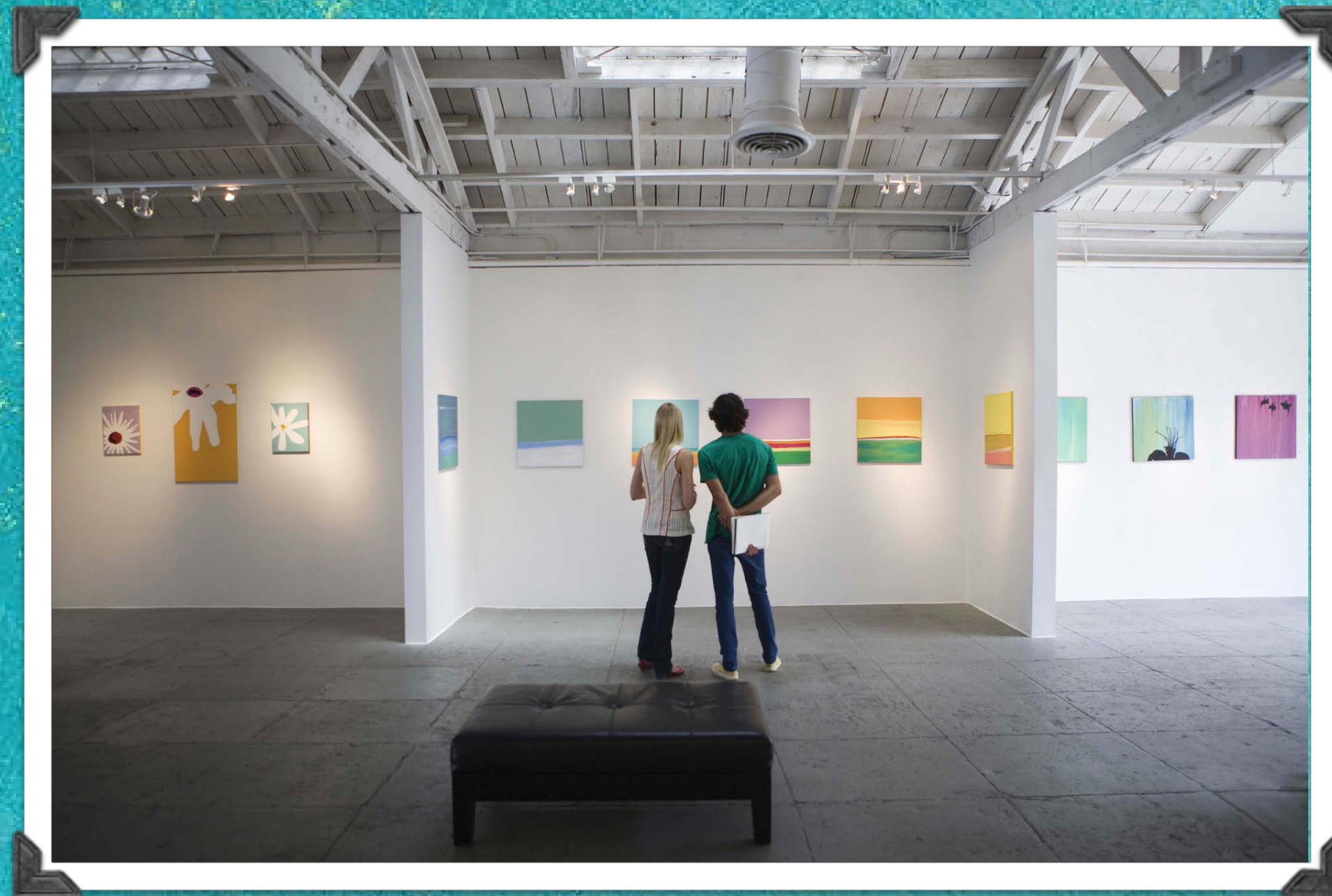
Back

Next

Plenary

Take a walk around the gallery of self portraits in your classroom. As you walk around think about how each person has been successful today.

If you don't want your work looked at, turn it over.



Back