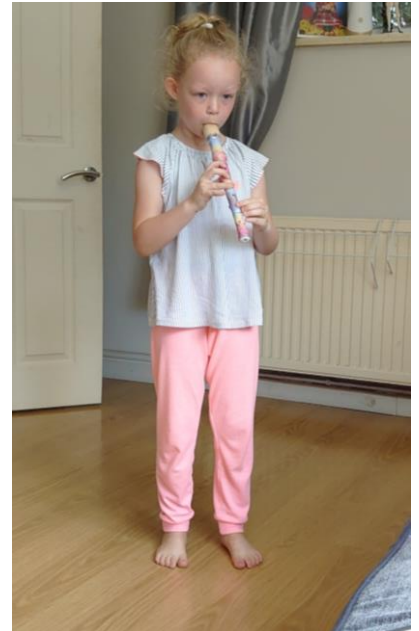





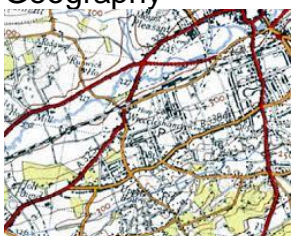
19<sup>th</sup> June 2020

Dear Year 2

We hope you are all keeping well and have been busy this week. We can see lots of you have worked hard on Readwriter. Well done! If your spelling improves you will find writing a lot easier. The Year 2 Key Worker children have been completing the same learning and challenges in school as we have set for you at home. Hopefully you have been able to complete some of them.



Here are some other suggestions of more practical activities you might like to try this week.

<p>Reading for Pleasure</p> 	<p>What have you been reading this week? Did you find time to listen to Cyril and Pat by Emily Gravett?</p> <p>Have you heard that the Summer Reading Challenge has been launched? Take a look at the website to see how you can get involved.  <a href="https://summerreadingchallenge.org.uk/">https://summerreadingchallenge.org.uk/</a></p> <p>This week choose one of your favourite stories and create some artwork or response linked to it. If you look carefully at the photo on the first sheet you might see the maze Mia made linked to the Percy the Park Keeper story she read.</p>
<p>Science</p> 	<p>This week we are thinking about habitats. What is a habitat? How many different habitats can you name? How do the habitats differ? What lives in each habitat?  <a href="https://www.bbc.co.uk/bitesize/articles/zhvmt39">https://www.bbc.co.uk/bitesize/articles/zhvmt39</a></p> <p>Think about a habitat near where you live. It might be a large habitat like your garden, the woods or the park, or a small habitat such as an oak tree or under a log. Explore that habitat and make a record of what lives there. Why do you think they live there? Have a go at the Blackbird's lunch challenge. If you were a blackbird, where would you live so you could find plenty of food?</p>
<p>RE</p> 	<p>Did you watch the clips last week about the Bible? How many Bible stories can you name? This week we will be thinking about why and how Christians pray.  <a href="https://request.org.uk/restart/2017/05/30/question-pod-3/">https://request.org.uk/restart/2017/05/30/question-pod-3/</a></p> <p>Have a go at writing your own teaspoon (tsp) prayer. Prayers often include a 'thank you', a 'sorry' and a 'please'. If you are happy to, please share your prayers with us.</p>
<p>Geography</p> 	<p>Are you able to name the geographical features in your local area? Do you know the difference between a semi-detached and terrace house? Can you recognise a bungalow? What do the different road signs mean?</p> <p>Take a walk around your local area and see how many features you can name. We have included an activity linked to Wrecclesham Recreation Ground you could try. Or you could adapt the idea to somewhere near where you live.</p>
<p>Other recommendations</p> <p><i>If you have any good ideas to share with the Year group, please let us know.</i></p>	<p>In a couple weeks, the Museum of London are doing a live stream event on the Great Fire of London. To find out more follow the links  <a href="https://www.facebook.com/events/529737937698071/">https://www.facebook.com/events/529737937698071/</a> or  <a href="https://www.museumoflondon.org.uk/museum-london/whats-on/great-fire-london-live-stream-part-1?id=267208&amp;utm_source=facebookeventfirelivestream11606&amp;utm_medium=org_social_media&amp;utm_campaign=&amp;fbclid=IwAR2O--7mcP_x1XvIadOxr4bpdANesCkPqxmX3lvReCqokTwNMzwVBp4Ygw">https://www.museumoflondon.org.uk/museum-london/whats-on/great-fire-london-live-stream-part-1?id=267208&amp;utm_source=facebookeventfirelivestream11606&amp;utm_medium=org_social_media&amp;utm_campaign=&amp;fbclid=IwAR2O--7mcP_x1XvIadOxr4bpdANesCkPqxmX3lvReCqokTwNMzwVBp4Ygw</a></p>

Remember, we would love to hear how you are doing so send us one piece of learning you are proud of. We will also update the challenges on Mathletics, Readwriter and Purple Mash.

Whatever you choose to do, have fun, stay safe and be kind to one another.

With love from

Mrs Hill, Ms Edmonds and Mrs Afonso